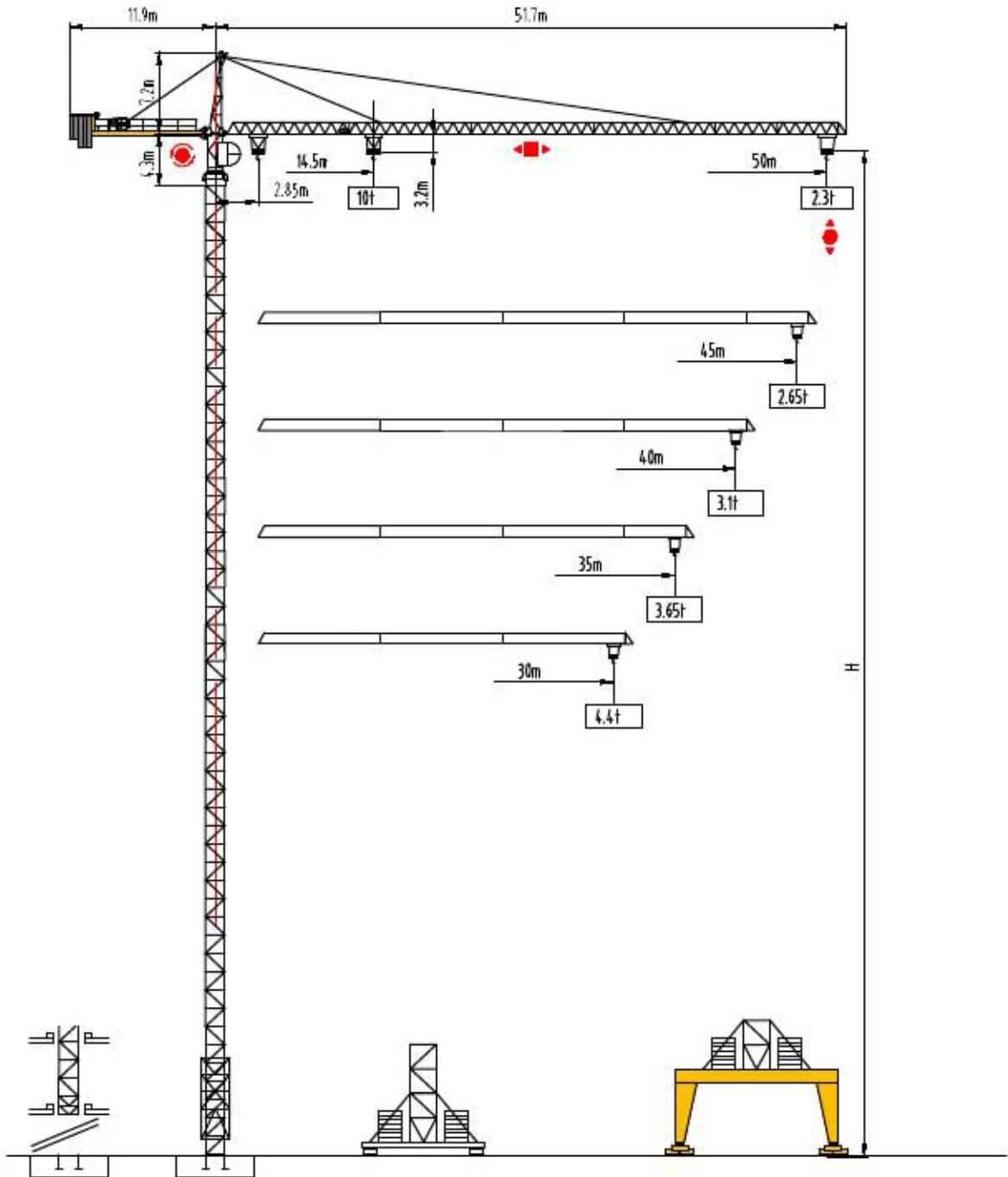




沈阳三洋建筑机械有限公司
SHENYANG SANYO BUILDING MACHINERY CO., LTD

TOWER CRANE QTZ型145tm
(F0/23B)





塔身截面 Mast □ 1.6m×1.6m

30-50m

PA452

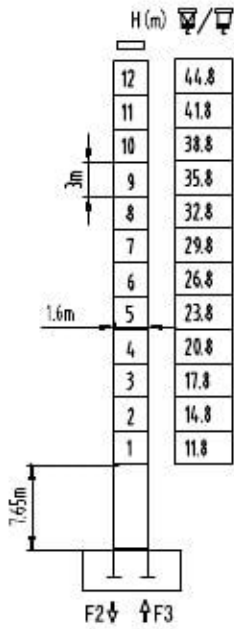
SA452

塔身截面 Mast □ 2m×2m

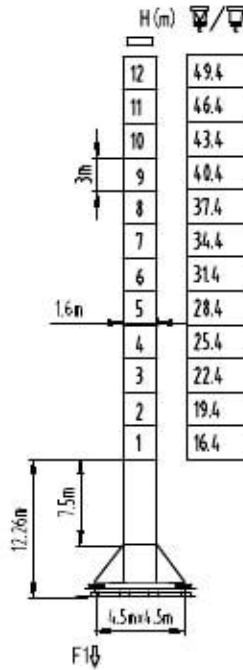
30-50m

PA664

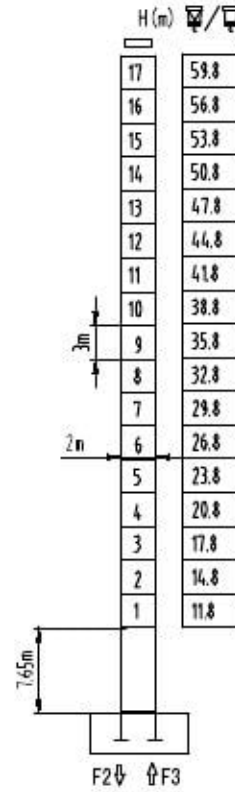
VA650



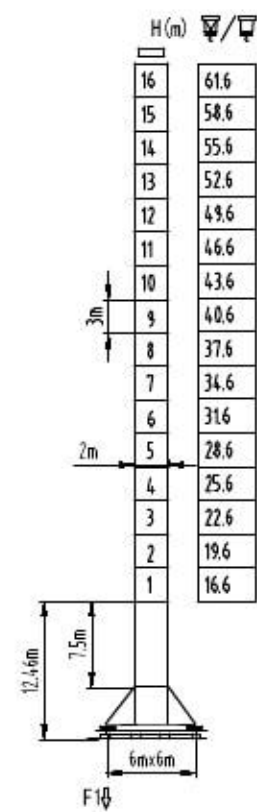
F2	90t	118t
F3	66t	92t
⊕	41t	



F1	70t	89t
⊕	50t	



F2	108t	192t
F3	68t	157t
⊕	58t	

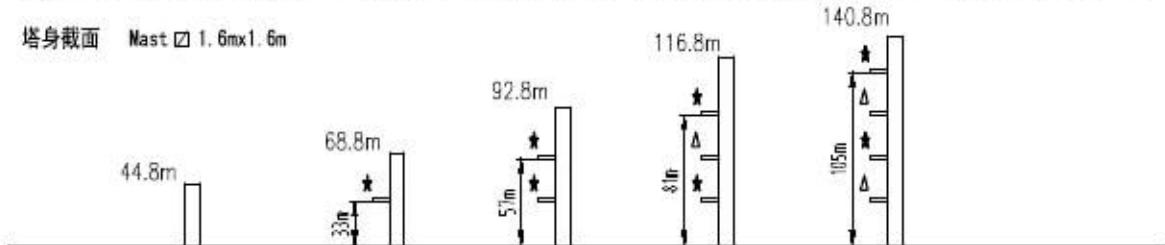


F1	86t	122t
⊕	69t	

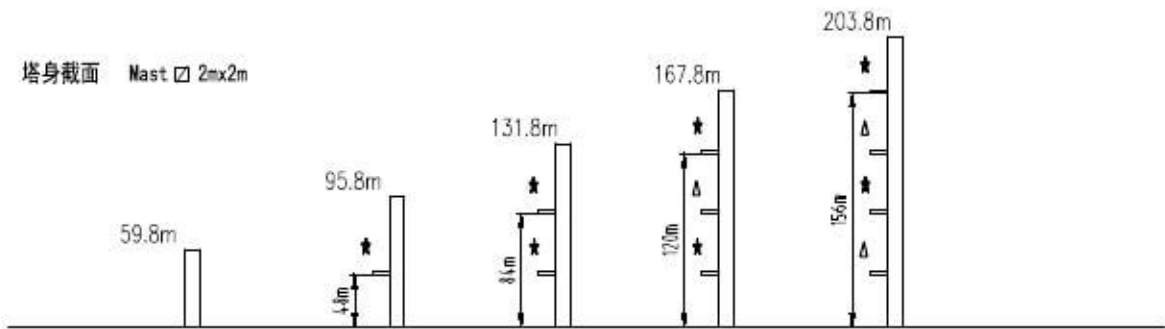
固定式附着高度 Anchoring height of stationary crane

★ 紧固附着框 Anchorages tightened △ 放松附着框 Anchorages released 如需达到更高的高度, 请与我们联系。For greater heights, consult us.

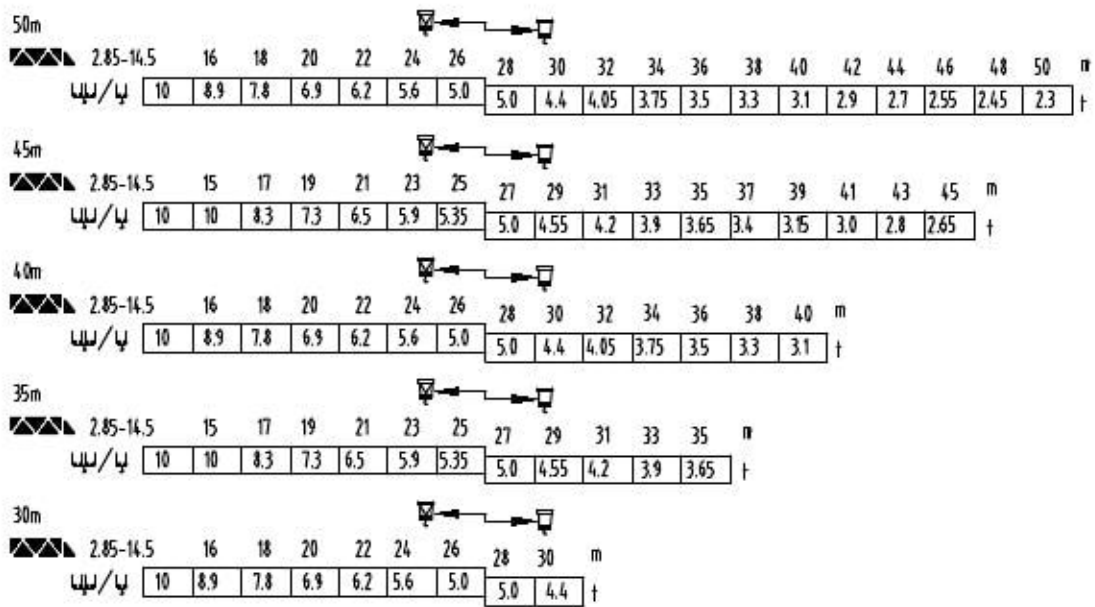
塔身截面 Mast □ 1.6m×1.6m



塔身截面 Mast □ 2m×2m



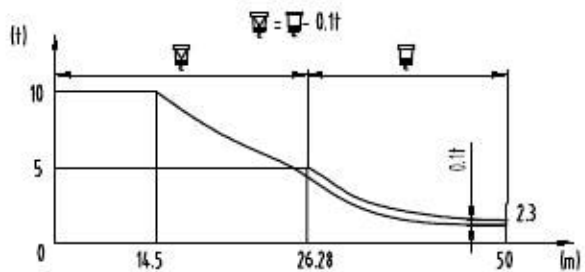
载荷特性 Load diagrams



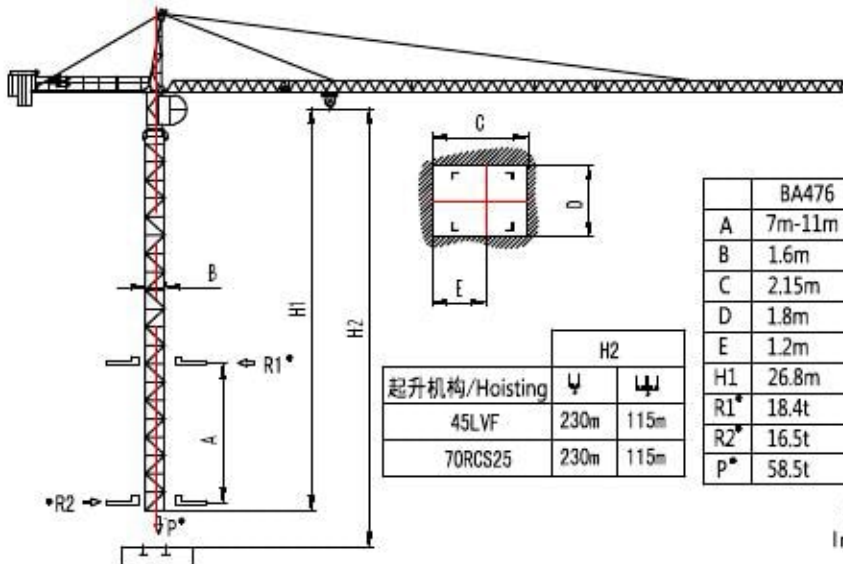
标准小车可使用 2/4 倍率绳 standard trolley 2/4 fail.

使用四倍率时, 应从二倍率的载荷中减去 0.1 吨

When using 4x subtract 0.1t from the loads 2x




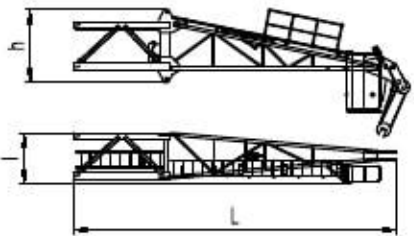
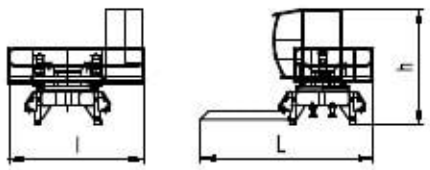
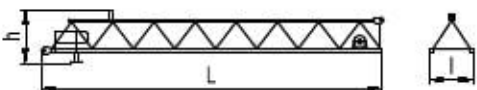
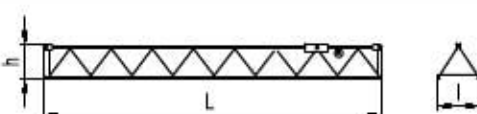
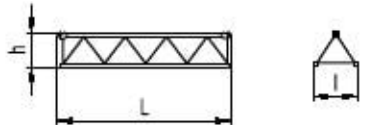
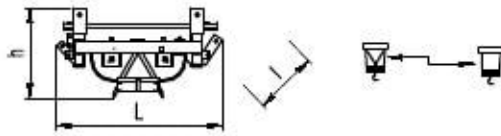

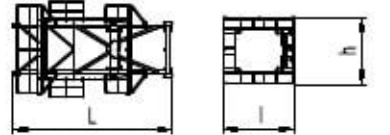
内爬塔机 Climbing crane


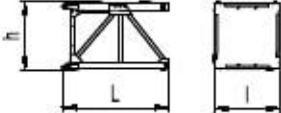
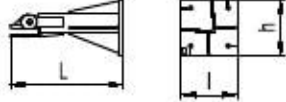
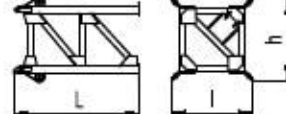
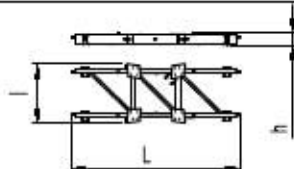
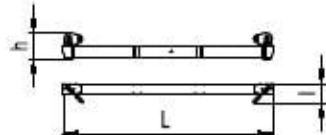
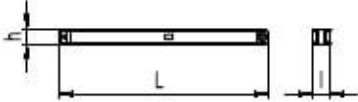
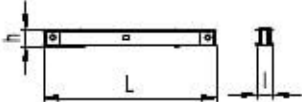


	BA476	BA479	BA675
A	7m-11m	12m-19m	16m-21m
B	1.6m	1.6m	2m
C	2.15m	2.31m	2.58m
D	1.8m	1.77m	2.17m
E	1.2m	1.36m	1.495m
H1	26.8m	43.3m	53.6m
R1*	18.4t	21.8t	27.9t-21t
R2*	16.5t	18.9t	14.7t-10.4t
P*	58.5t	71.5t	81.5t

● 工作状态无系数
In service without coefficient

外形尺寸重量表 Dimensions weights

塔机回转部分 Slewing		L(m)	l(m)	h(m)	Kg
平衡臂 Counter-jib		11.4	2.61	1.90	4897
塔头 Cat-head		9.45	1.32	2.08	4080
回转机构 Slewing mechanism		6.08 6.18	3.78 3.78	3.46 3.46	4150 3932
起重臂节 Jib section		10.15	1.19	1.26	1576
起重臂节 Jib section		10.12 10.23 10.25	1.19 1.19 1.19	0.96 0.96 0.95	1112 946 825
起重臂节 Jib section		5.25 5.25	1.19 1.19	0.95 0.95	668 668
变幅小车 Trolley		2.2	1.522	0.975	477
吊钩滑轮组 Hook assembly		0.864	0.195	1.665	255
顶升装置 Telescoping equipment		L(m)	l(m)	h(m)	Kg
顶升套架 Telescopic cage		6.785 7.26	3.436 4.3	3.436 4.05	3495 4288

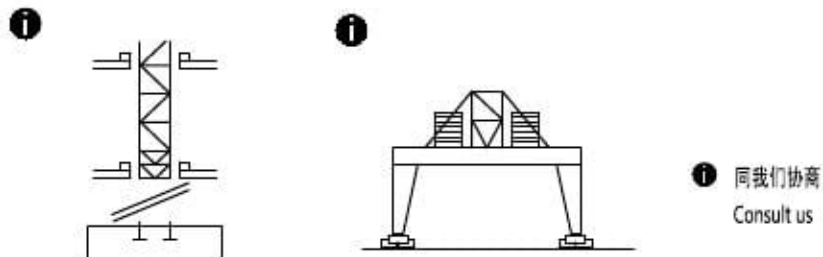
塔身部分 Mast		L(m)	l(m)	h(m)	Kg	
基础节 Basic mast		□1.6m	7.76	1.70	1.76	2625
		□2m	7.76	2.0	2.1	3790
标准节 Standard mast		□1.6m	3.28	1.70	1.76	1188
		□2m	3.28	2.0	2.1	1577
底部 Base		L(m)	l(m)	h(m)	Kg	
固定支脚 Fixing angles		□1.6m	1.195	0.49	0.49	181.5
		□2m	1.2	0.6	0.6	295
底架塔节 Chassis mast		□1.6m	3.69	2.00	2.00	2240
		□2m	3.80	2.50	2.50	3780
底架纵梁 Side member		□1.6m	6.32	2.08	0.54	1200
		□2m	7.14	2.484	0.54	2140
底架横梁 Traverse		□1.6m	4.88	0.467	0.705	1110
		□2m	6.38	0.58	0.808	1500
底架撑杆 Brace rod		□1.6m	3.86	0.27	0.28	350
		□2m	4.45	0.34	0.37	620
底架水平杆 Horizontal member		□1.6m	1.66	0.17	0.12	65
		□2m	2.44	0.22	0.24	205

机构特性 Mechanisms specification														Kw	
起升 Hoisting		70RCS25	n/nin	0-5	0-11	0-21	0-42	0-85	0-25	0-5	0-11	0-21	0-42	550	51.5
		45LVF	n/nin	0-4.8	0-20	0-40	0-60	0-80	0-2.4	0-10	0-20	0-30	0-40	500	45
			t	5	5	5	2.5	1.25	10	10	10	5	2.5		
变幅 Trolleying		4TVF	n/nin	0-55										4	
回转 Slewing		5.5SVF	r/nin	0-0.8										5.5x2	
		95SVT												95Nm x2	
行走 Travelling		4TRVF	n/nin	0-12										4x4	
电源 Power Supply		380V 50Hz / 440V 60Hz													
KVA 供电容量 Necessary Electric Power		90KVA													

平衡臂配重
Counter-jib ballast

		(t) 45LVF	(t) 70RCS25
50m	11.9m	18.35	16.1
45m	11.9m	16.75	14.8
40m	11.9m	15.70	13.6
35m	11.9m	12.03	10.5
30m	11.9m	11.01	9.3

可变换的其它安装方式
Mounting possibilities



F 反力 • 工作状态 In service ⊕ 自重 不带荷载及配重，最大臂长及标准高度时的自重。
Reactions ■ 非工作状态 Out of service Self-load Without load and counter-weight with longest jib and standard height