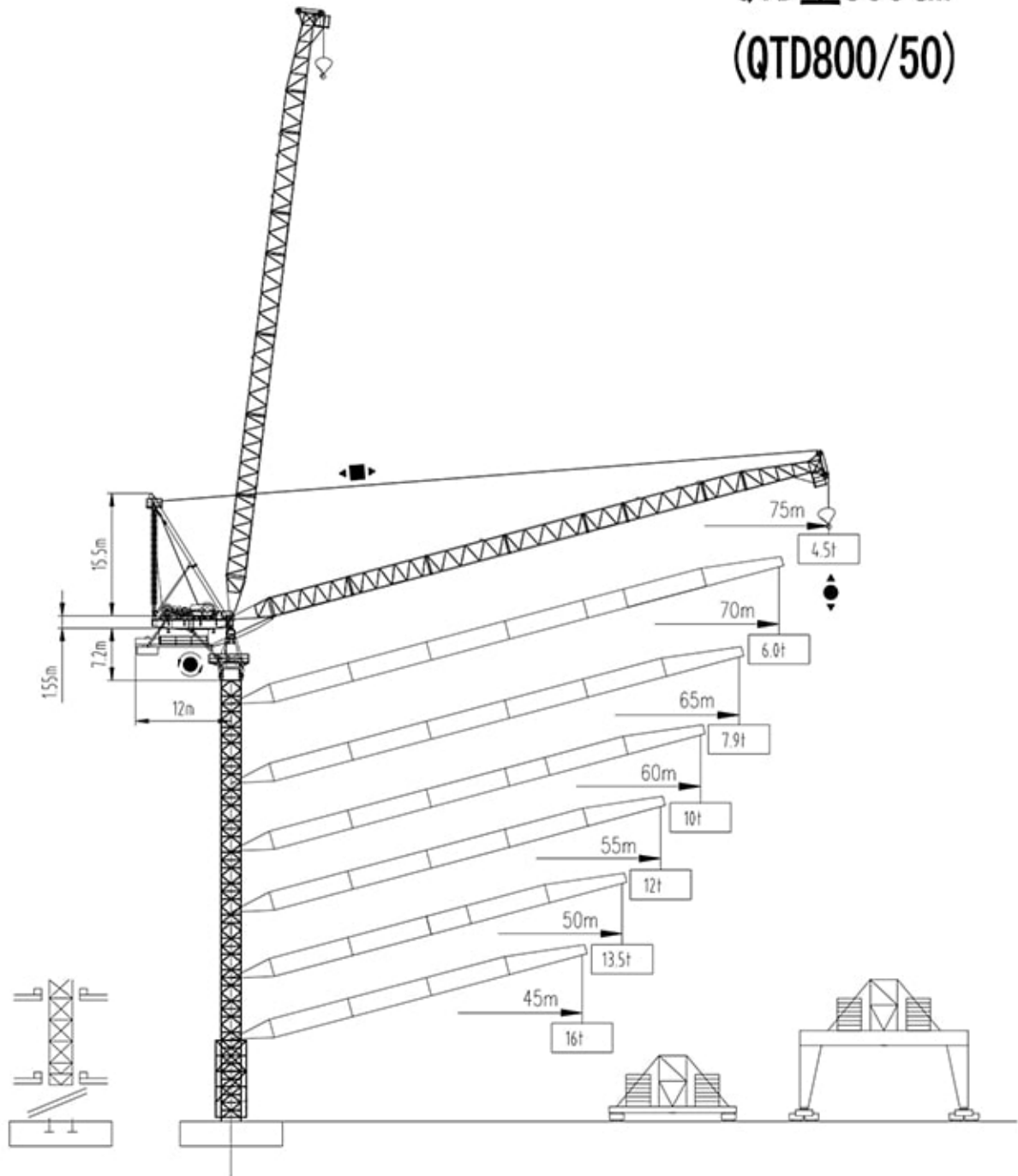




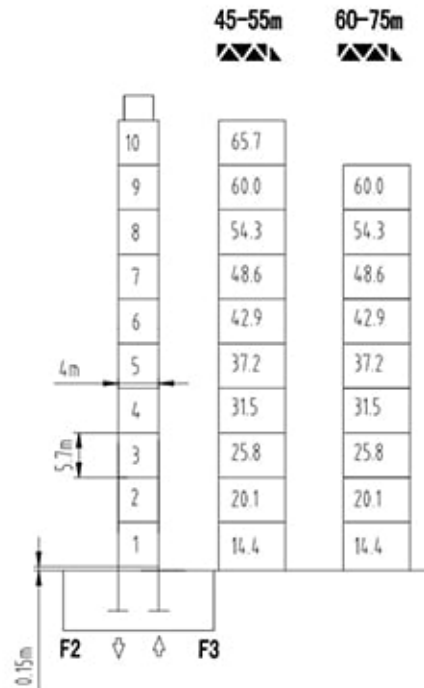
沈阳三洋建筑机械有限公司  
SHENYANG SANYO BUILDING MACHINERY CO., LTD

TOWER CRANE **QTD型800tm**  
(QTD800/50)





塔身截面 Mast □ 4.0m×4.0m



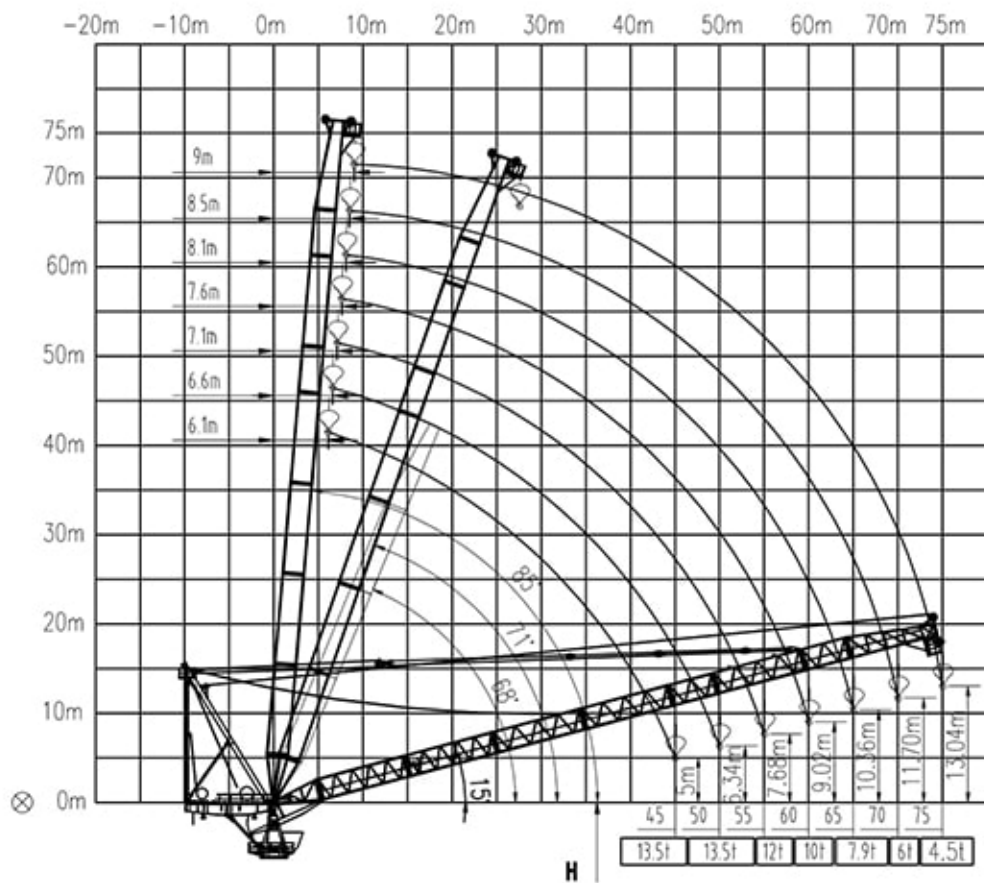
|    |        |        |
|----|--------|--------|
| F2 | ● 294t | ■ 310t |
| F3 | ● 135t | ■ 178t |
|    | 265t   |        |

Reactions F 反力

- Reactions in service 工作状态
- Reactions out of service 非工作状态
- Without load and ballast with longest jib and maxmum height 整机自重不含吊载及配重
- Consult us 同我们协商

载荷特性 Load diagrams

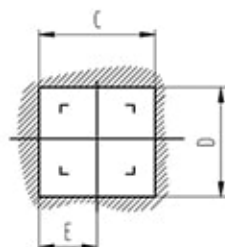
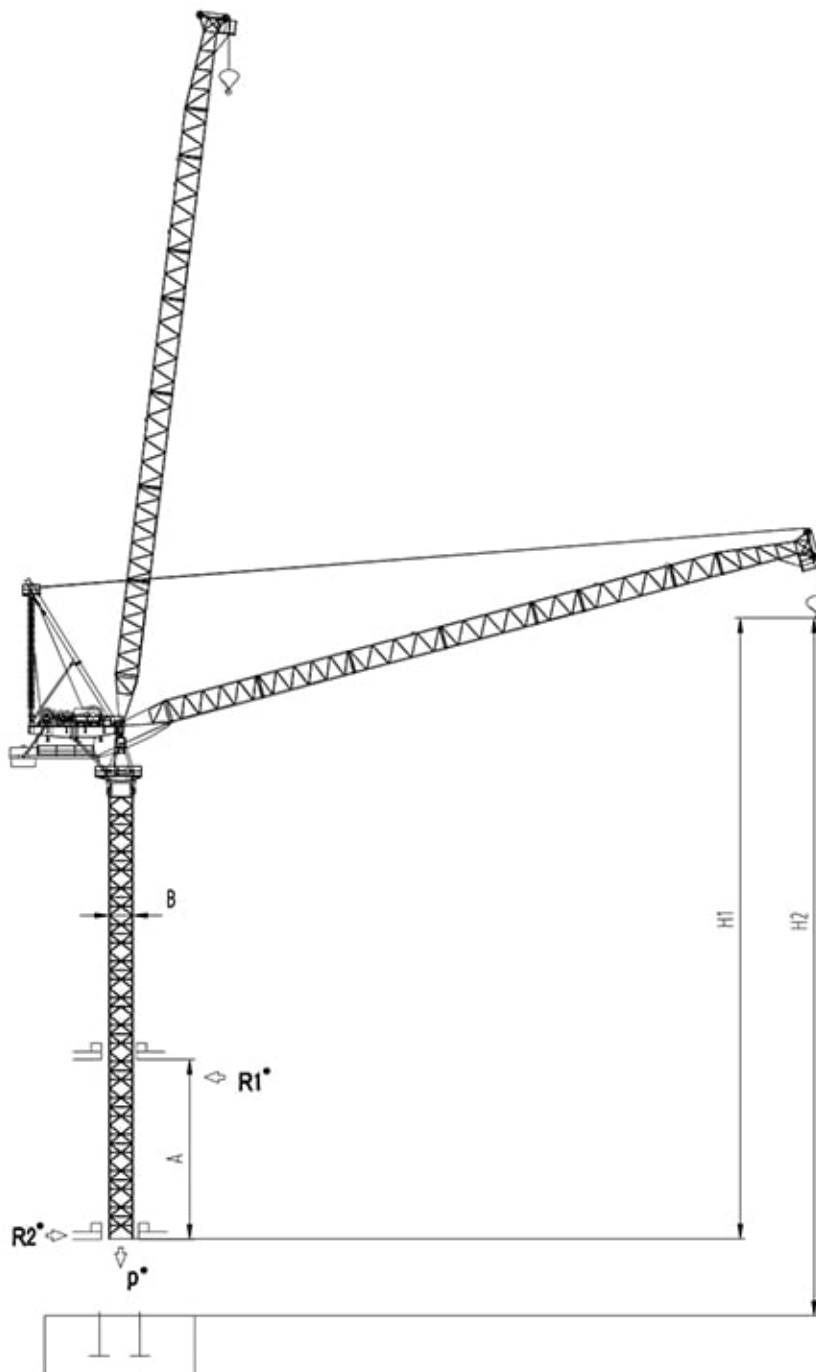
|       |          |      |      |      |      |      |      |      |      |      |      |      |      |      |      |      |      |      |      |      |      |      |      |       |
|-------|----------|------|------|------|------|------|------|------|------|------|------|------|------|------|------|------|------|------|------|------|------|------|------|-------|
| 75m   | 85-21    | 22.5 | 25   | 27.5 | 27.7 | 30   | 32.5 | 35   | 37.5 | 40   | 42.5 | 45   | 47.5 | 50   | 52.5 | 55   | 57.5 | 60   | 62.5 | 65   | 67.5 | 70   | 72.5 | 75 m  |
| ψ / l | 36.0     | 33.0 | 28.6 | 24.9 | 25.0 | 22.4 | 20.0 | 17.9 | 16.1 | 14.6 | 13.2 | 12.0 | 10.9 | 9.9  | 9.1  | 8.3  | 7.6  | 7.0  | 6.4  | 5.9  | 5.5  | 5.1  | 4.7  | 4.5 t |
| 70m   | 8-21     | 22.5 | 25   | 27.5 | 28.1 | 30   | 32.5 | 35   | 37.5 | 40   | 42.5 | 45   | 47.5 | 50   | 52.5 | 55   | 57.5 | 60   | 62.5 | 65   | 67.5 | 70 m |      |       |
| ψ / l | 36.0     | 33.0 | 28.6 | 25.0 | 25.0 | 22.9 | 20.5 | 18.5 | 16.7 | 15.1 | 13.8 | 12.6 | 11.5 | 10.6 | 9.7  | 9.0  | 8.3  | 7.7  | 7.2  | 6.7  | 6.3  | 6.0  | t    |       |
| 65m   | 7-16.5   | 17.5 | 20   | 22.5 | 25   | 27.5 | 29.1 | 30   | 32.5 | 35   | 37.5 | 40   | 42.5 | 45   | 47.5 | 50   | 52.5 | 55   | 57.5 | 60   | 62.5 | 65 m |      |       |
| ψ / l | 50.0     | 46.6 | 39.5 | 34.0 | 29.6 | 26.0 | 25.0 | 24.1 | 21.6 | 19.6 | 17.8 | 16.2 | 14.8 | 13.6 | 12.6 | 11.6 | 10.8 | 10.0 | 9.4  | 8.8  | 8.3  | 7.9  | t    |       |
| 60m   | 7-1-16.5 | 17.5 | 20   | 22.5 | 25   | 27.5 | 29.5 | 30   | 32.5 | 35   | 37.5 | 40   | 42.5 | 45   | 47.5 | 50   | 52.5 | 55   | 57.5 | 60 m |      |      |      |       |
| ψ / l | 50.0     | 46.4 | 39.5 | 34.1 | 29.8 | 26.3 | 25.0 | 24.7 | 22.3 | 20.3 | 18.5 | 17.0 | 15.6 | 14.5 | 13.4 | 12.5 | 11.7 | 11.0 | 10.4 | 10.0 | t    |      |      |       |
| 55m   | 6-6-16.3 | 17.5 | 20   | 22.5 | 25   | 27.5 | 30   | 32.5 | 35   | 37.5 | 40   | 42.5 | 45   | 47.5 | 50   | 52.5 | 55 m |      |      |      |      |      |      |       |
| ψ / l | 50.0     | 46.2 | 39.3 | 34.1 | 29.8 | 26.4 | 25.0 | 22.7 | 20.7 | 18.9 | 17.5 | 16.2 | 15.0 | 14.1 | 13.2 | 12.5 | 12.0 | t    |      |      |      |      |      |       |
| 50m   | 6-1-16.1 | 17.5 | 20   | 22.5 | 25   | 27.5 | 29.9 | 30   | 32.5 | 35   | 37.5 | 40   | 42.5 | 45   | 47.5 | 50 m |      |      |      |      |      |      |      |       |
| ψ / l | 50.0     | 45.4 | 38.7 | 33.5 | 29.4 | 26.0 | 25.0 | 25.0 | 22.6 | 20.7 | 19.0 | 17.5 | 16.2 | 15.2 | 14.2 | 13.5 | t    |      |      |      |      |      |      |       |
| 45m   | 5-5-16   | 17.5 | 20   | 22.5 | 25   | 27.5 | 30   | 30.1 | 32.5 | 35   | 37.5 | 40   | 42.5 | 45 m |      |      |      |      |      |      |      |      |      |       |
| ψ / l | 50.0     | 45.1 | 38.5 | 33.5 | 29.4 | 26.2 | 25.0 | 25.0 | 23.0 | 21.0 | 19.4 | 18.0 | 16.9 | 16.0 | t    |      |      |      |      |      |      |      |      |       |



◻ Weathervaning position 风向标位置

⊙ Jib hinge shaft 臂根铰点

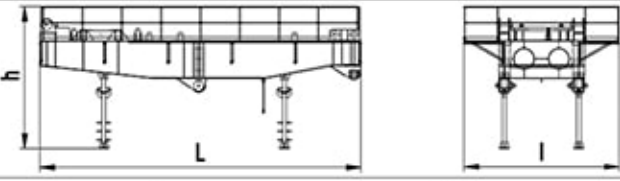
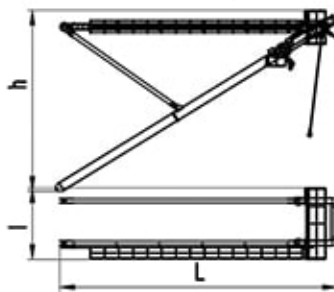
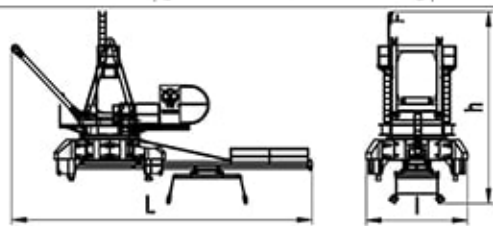

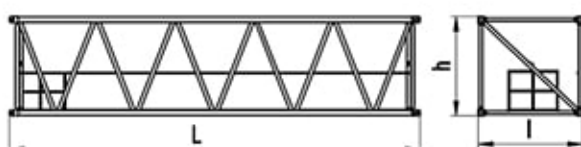
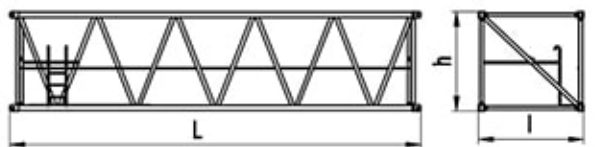
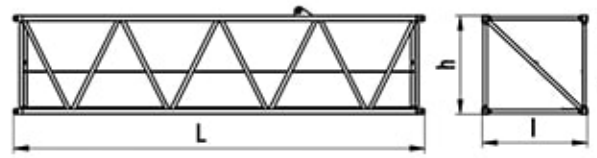
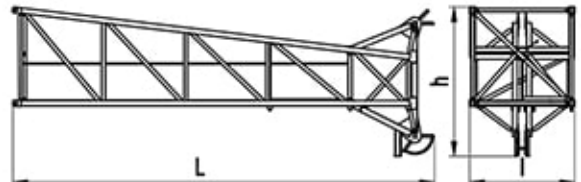
内爬塔机 Climbing crane

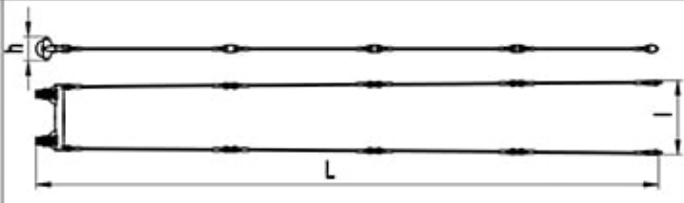
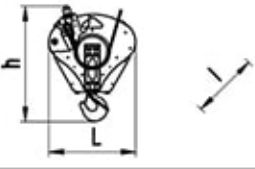
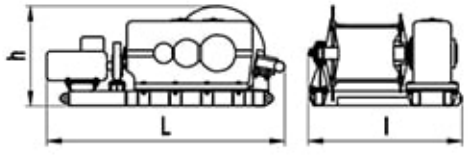
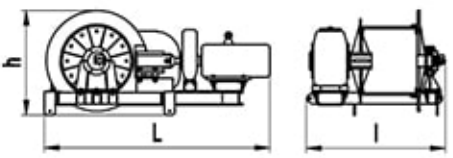
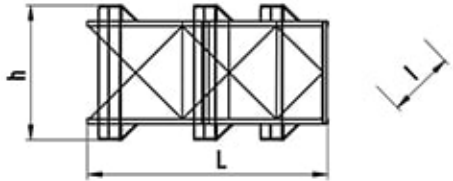
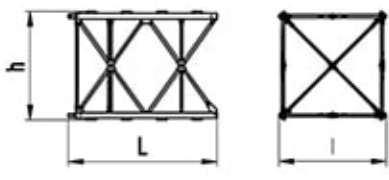
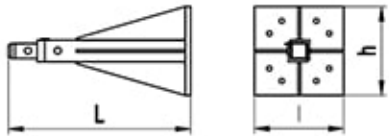







| 内爬  | A <sub>min</sub> | A <sub>max</sub> |
|-----|------------------|------------------|
| A   | 15m              | 18m              |
| B   | 2.5m             |                  |
| C   | 3.800m           |                  |
| D   | 2.900m           |                  |
| E   | 1.900m           |                  |
| H1  | 45.55m           |                  |
| R1* | 115t             | 95t              |
| R2* | 100t             | 85t              |
| P*  | 276t             |                  |

- 工作状态无系数 In service without coefficient
- 75°臂15°时 75m jib(15 degree).



外形尺寸重量表 Dimensions weights

| 塔机回转部分 Slewing            |  | L(m)  | l(m)  | h(m)  | Kg    |      |
|---------------------------|--|-------|-------|-------|-------|------|
| 机台<br>Machine             |    | 10.13 | 4.90  | 4.47  | 21421 |      |
| A 架<br>Frame A            |     | 15.56 | 10.16 | 9.81  | 16330 |      |
| 回转机构<br>Slewing mechanism |     | 15.59 | 5.25  | 12.96 | 39796 |      |
| 起重臂节<br>Jib section       |    | 5.54  | 2.65  | 2.50  | 2824  |      |
| 起重臂节<br>Jib section       |  | 10.37 | 2.65  | 2.50  | 2694  |      |
| 起重臂节<br>Jib section       |  | 10.37 | 2.65  | 2.50  | 2761  |      |
| 起重臂节<br>Jib section       |  | 4、5   | 10.37 | 2.65  | 2.50  | 2589 |
|                           |  | 6、8   | 5.37  | 2.65  | 2.50  | 1322 |
|                           |  | 7     | 10.37 | 2.65  | 2.50  | 2442 |
| 起重臂节<br>Jib section       |  | 10.65 | 2.65  | 3.77  | 3320  |      |

| 塔机回转部分 Slewing             |   | L(m)  | l(m)  | h(m)  | Kg    |
|----------------------------|---|-------|-------|-------|-------|
| 拉杆<br>Tie-bar              |   | 26.19 | 2.69  | 1.01  | 4275  |
| 吊钩<br>Hook                 |    | 2.20  | 0.68  | 2.92  | 2257  |
| 起升机构<br>Hoisting mechanism |    | 5.34  | 3.45  | 2.24  | 24200 |
| 变幅机构<br>Luffing mechanism  |   | 3.79  | 2.34  | 1.76  | 8870  |
| 顶升装置 Telescoping equipment |   | L(m)  | l(m)  | h(m)  | Kg    |
| 套架<br>Telescopic cage      |  | 13.55 | 7.210 | 6.745 | 32080 |
| 塔身部分 Mast                  |   | L(m)  | l(m)  | h(m)  | Kg    |
| 加强节<br>Reinforcing mast    |  | 5.990 | 4.336 | 4.336 | 8500  |
| 标准节<br>Standard mast       |   | 5.990 | 4.336 | 4.336 | 7300  |
| 底部 Base                    |   | L(m)  | l(m)  | h(m)  | Kg    |
| 固定支脚<br>Fixing angles      |  | 1.79  | 0.900 | 0.900 | 780   |

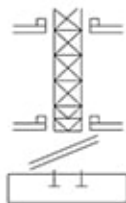
| 机构特性<br>Mechanisms specification  |   |         |       | ↓    |      |      | ↓                     |      |      |  | kw  |
|---|---|---------|-------|------|------|------|-----------------------|------|------|---|-----|
| 起升<br>Hoisting  |  | 315LVF  | m/min | 0-32 | 0-38 | 0-64 | 0-16                  | 0-19 | 0-32 | 600   | 315 |
|   |   |         | t     | 25   | 20   | 8    | 50                    | 40   | 16   |   |     |
| 拉臂<br>Luffing   |  | 132DVF  | min   | 0-3  |      |      |                       |      |      | 132   |     |
| 回转<br>Slewing   |  | 120SVT  | r/min | 0.64 |      |      |                       |      |      | 120Nm×3   |     |
|   |   | 18.8SVF |       |      |      |      |                       |      |      | 18.8×3  |     |
|  电源 Power Supply |   |         |       |      |      |      | 380V 50Hz / 440V 60Hz |      |      |   |     |
| KVA 供电容量 Necessary Electric Power   |   |         |       |      |      |      | 510KVA                |      |      |   |     |

平衡臂配重  
Counter-jib ballast

|        |  |  (t) |
|--------|---|--|
| 45-75m | 10.5-2.5m   | 47.563   |

可变换的其它安装方式  
Mounting possibilities

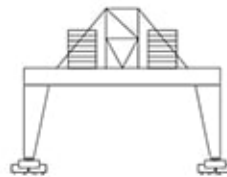
**i**



**i**



**i**



**i** 同我们协商  
Consult us

F 反力  
Reactions

• 工作状态 In service  
▪ 非工作状态 Out of service

⊕ 自重  
Self-load

不带荷载及配重, 最大臂长及标准高度时的自重  
Without load and counter-weight with longest jib and standard height