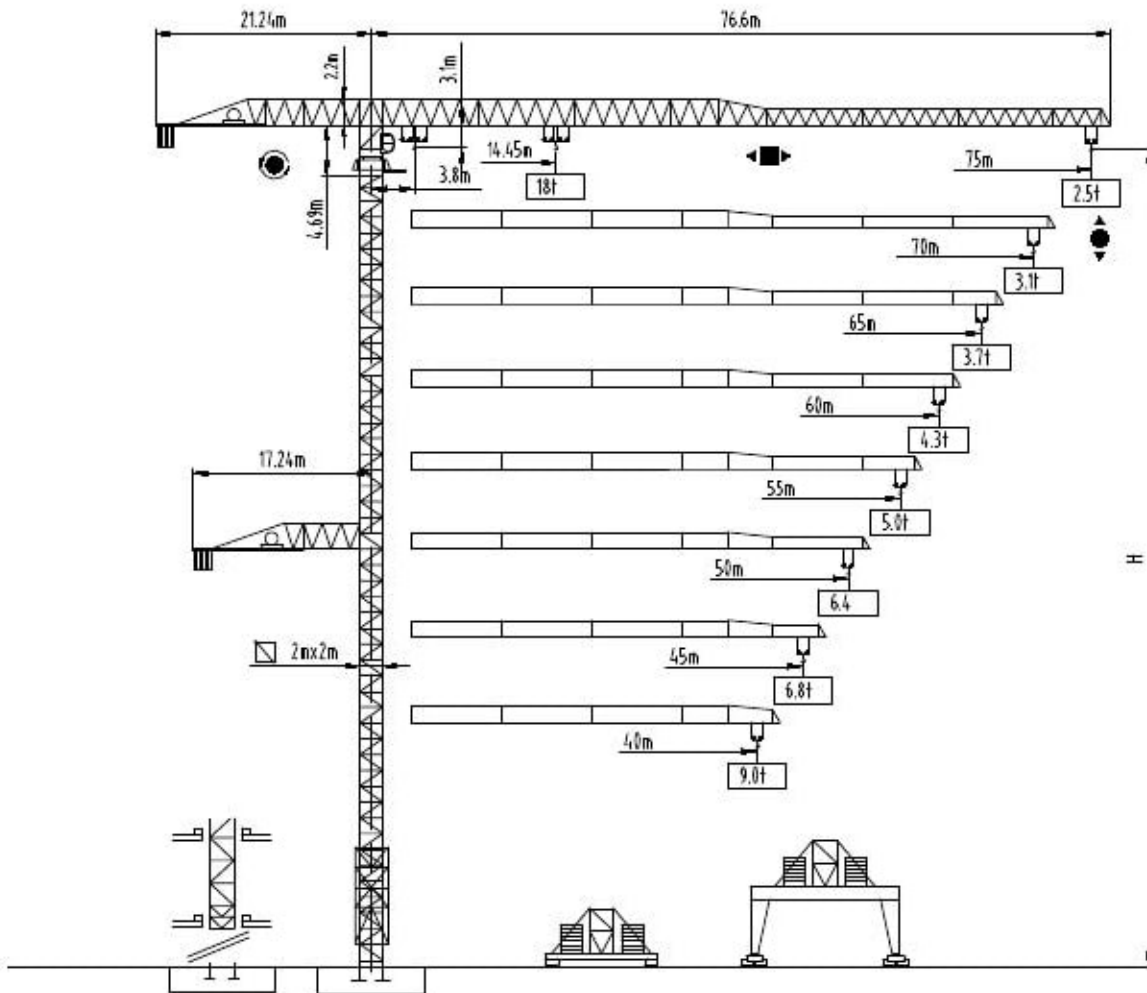




沈阳三洋建筑机械有限公司
SHENYANG SANYO BUILDING MACHINERY CO., LTD

TOWER CRANE QTP型320tm
(R75/25)



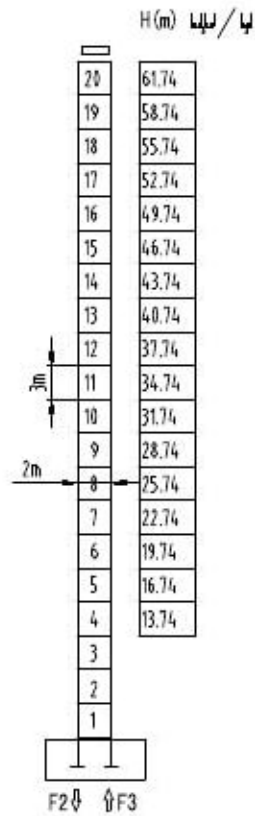
LEYONG TR. EST.
Machinery & Equipment

Tel No: +971-6-5323061

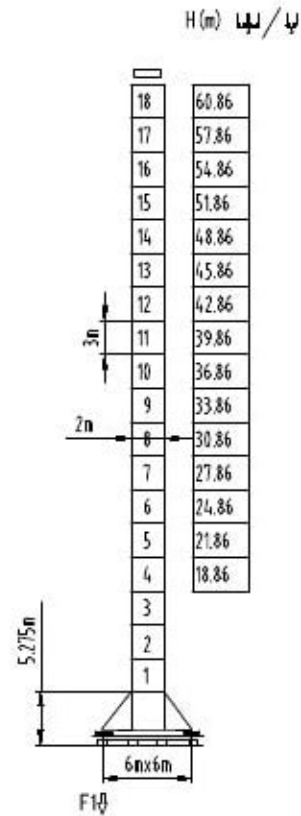


塔身截面 Mast 2mx2m

40-75m



| | | |
|----|--------|--------|
| F2 | • 180t | ▪ 220t |
| F3 | ▪ 110t | ▪ 184t |
| ⊕ | 96t | |



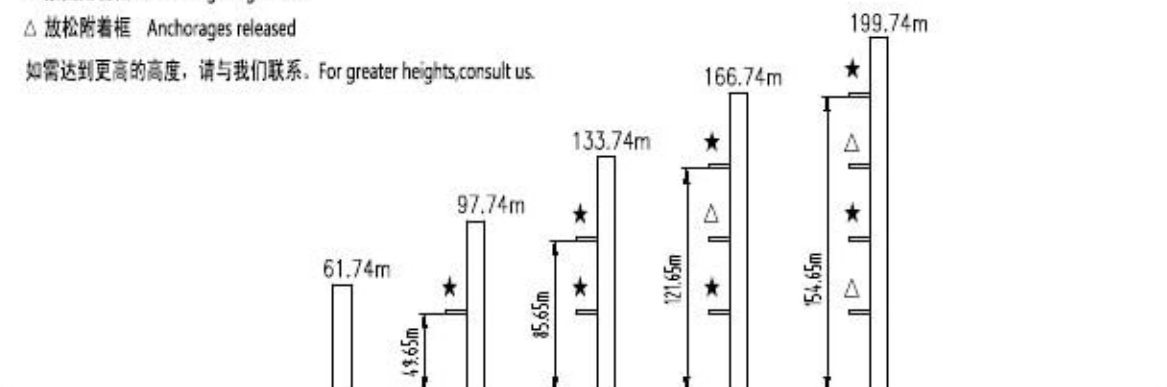
| | | |
|----|--------|--------|
| F1 | • 116t | ▪ 120t |
| ⊕ | 108t | |

固定式附着高度 Anchoring height of stationary crane

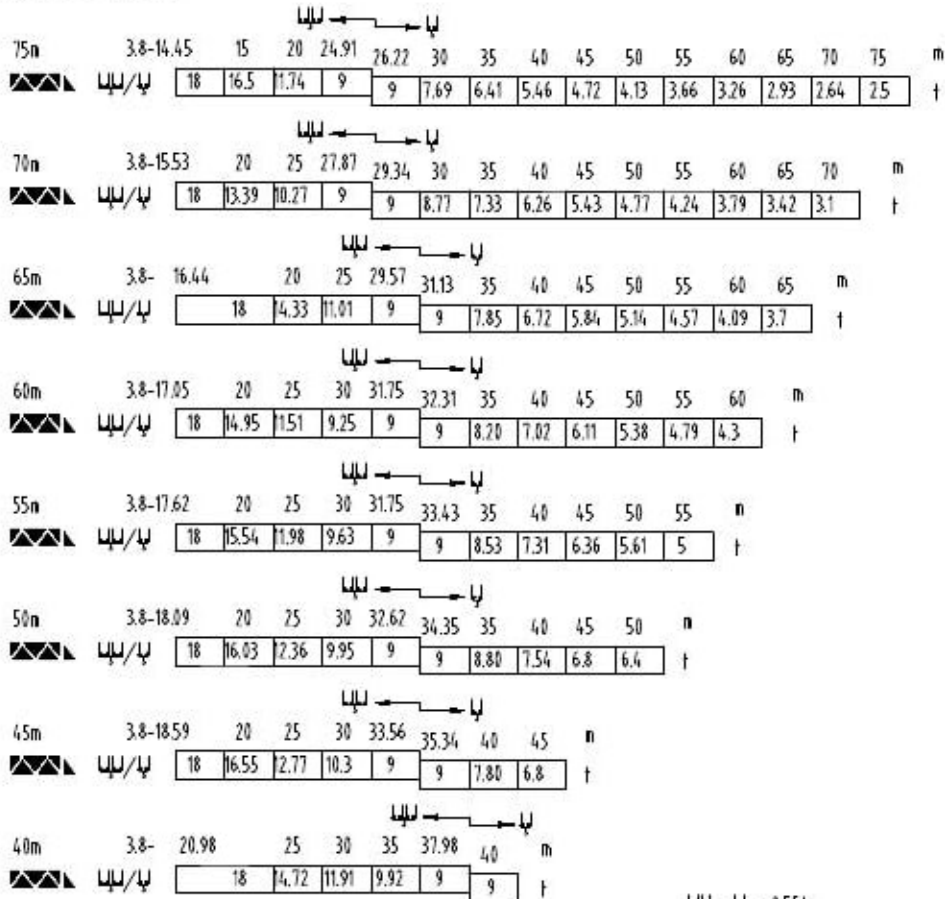
★ 紧固附着框 Anchorages tightened

△ 放松附着框 Anchorages released

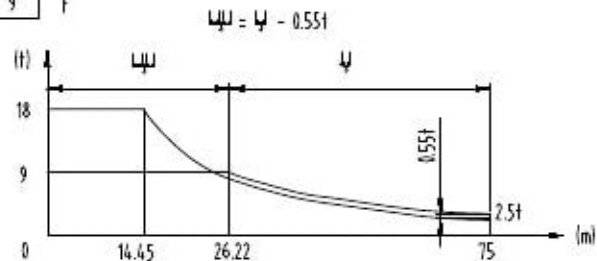
如需达到更高的高度, 请与我们联系。For greater heights, consult us.



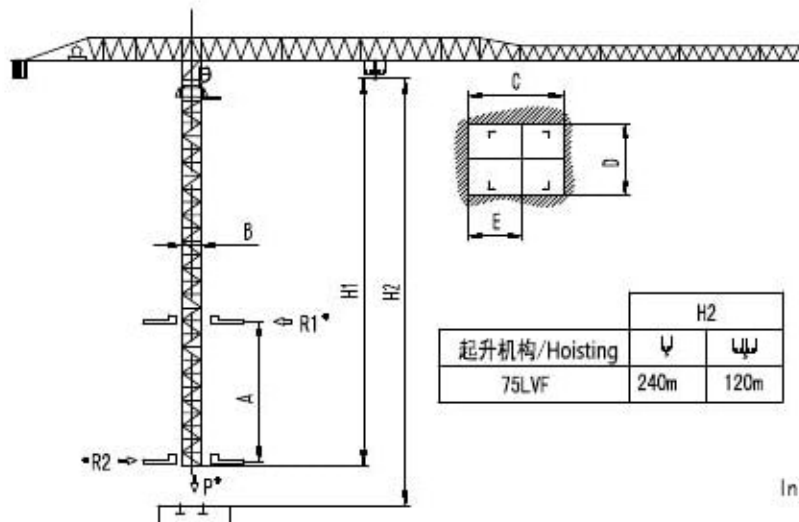
载荷特性 Load diagrams



Ψ/Ψ 标准小车可使用 2/4倍率绳 standard trolley 2/4 fall.
 使用四倍率时, 应从二倍率的载荷中减去0.55吨
 When using Ψ subtract 0.55t from the loads Ψ



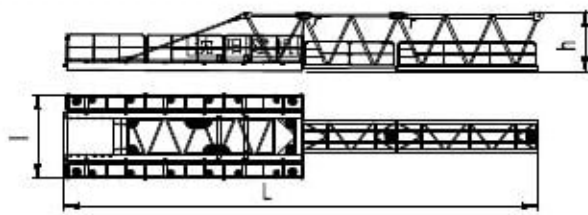
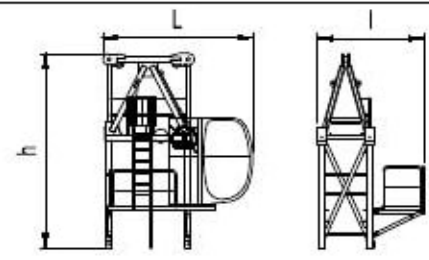
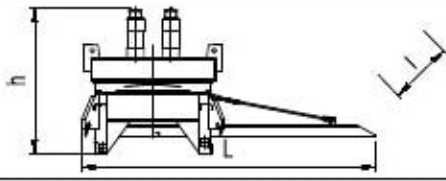
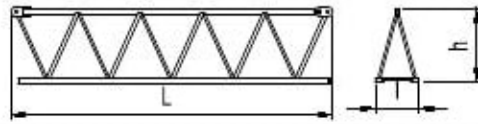

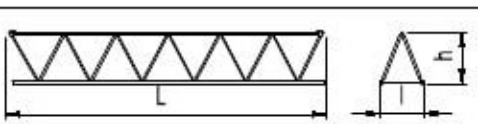
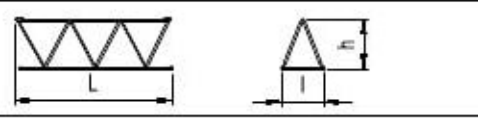
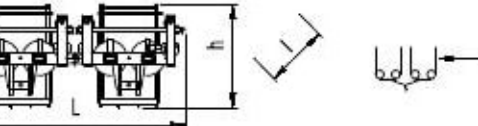
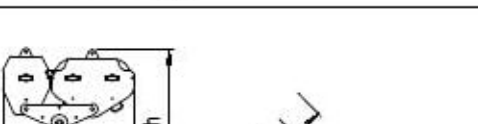


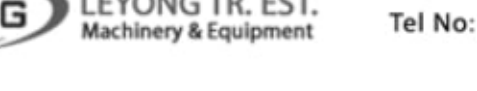
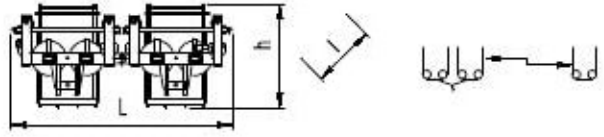
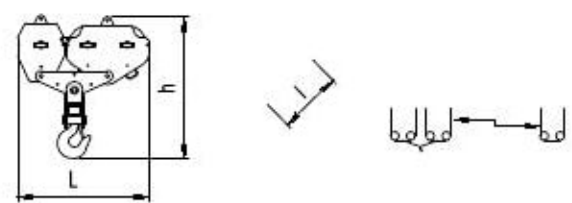
内爬塔机 Climbing crane

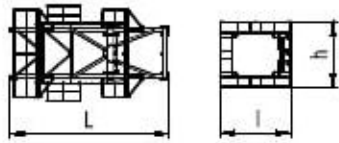
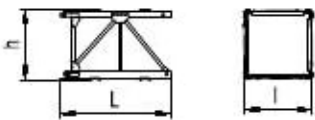
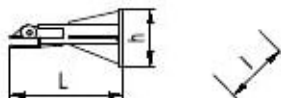
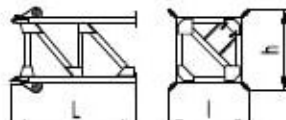
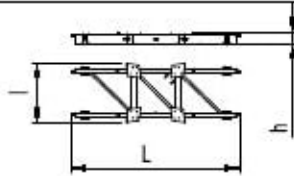

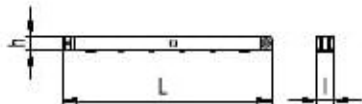
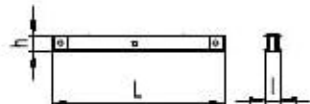


| | |
|-----|----------|
| A | 12m-19m |
| B | 2m |
| C | 3m |
| D | 2.2m |
| E | 1.5m |
| H1 | 43.74m |
| R1* | 339000Kg |
| R2* | 299000Kg |
| P* | 131000Kg |

● 工作状态无系数
 In service without coefficient

外形尺寸重量表 Dimensions weights

| 塔机回转部分 Slewing | | L(m) | l(m) | h(m) | Kg |
|---------------------------|--|-------|------|------|------|
| 平衡臂 Counter-jib |  | 20.4 | 3.6 | 2.54 | 9480 |
| 塔头 Cat-head |  | 4.1 | 3.05 | 5.3 | 3940 |
| 回转机构 Slewing mechanism |  | 5.1 | 2.5 | 2.65 | 7500 |
| 起重臂节 Jib section |  | 10.34 | 1.4 | 2.45 | 4200 |
| |  | 10.31 | 1.4 | 2.43 | 3495 |
| |  | 10.28 | 1.4 | 2.4 | 2650 |
| 起重臂节 Jib section |  | 5.24 | 1.4 | 2.38 | 1290 |
| 起重臂节 Jib section |  | 10.23 | 1.4 | 1.77 | 1748 |
| |  | 10.17 | 1.4 | 1.74 | 1446 |
| |  | 10.15 | 1.4 | 1.72 | 960 |
| 起重臂节 Jib section |  | 5.24 | 1.4 | 2.38 | 1310 |
| |  | 5.15 | 1.4 | 1.72 | 582 |
| 变幅小车 Trolley |  | 3.2 | 1.8 | 1.7 | 685 |
| 吊钩滑轮组 Hook assembly |  | 1.7 | 0.3 | 1.9 | 550 |

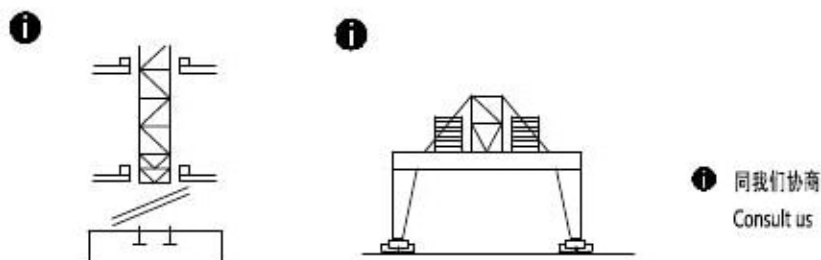
| 顶升装置 Telescoping equipment | | L(m) | l(m) | h(m) | Kg |
|----------------------------|---|-------|------|------|--------|
| 顶升套架 Telescopic cage |  | 7.26 | 4.3 | 4.05 | 4825 |
| 塔身部分 Mast | | L(m) | l(m) | h(m) | Kg |
| 标准节 Standard mast |  | 3.3 | 2.0 | 2.1 | 2010 |
| 底部 Base | | | | | |
| 固定支脚 Fixing angles |  | 1.365 | 0.8 | 0.8 | 490 |
| 底架塔节 Chassis mast |  | 3.82 | 2.6 | 2.6 | 3700 |
| 底架纵梁 Side member |  | 7.14 | 2.51 | 0.62 | 2500 |
| 底架横梁 Traverse |  | 6.42 | 0.62 | 0.91 | 1500x2 |
| 底架撑杆 Brace rod |  | 4.54 | 0.37 | 0.4 | 941x4 |
| 底架水平杆 Horizontal member |  | 2.44 | 0.24 | 0.24 | 156x4 |

| 机构特性 Mechanisms specification | | | م | | | | | م | | | | | 500 m | Kw |
|--------------------------------------|---------|-----------------------|-------|------|------|------|------|-------|------|------|------|------------|----------|----|
| 起升 Hoisting | 75LVF | m/min | 0-4.8 | 0-20 | 0-40 | 0-60 | 0-80 | 0-2.4 | 0-10 | 0-20 | 0-30 | 0-40 | | |
| | | f | 9 | 9 | 9 | 4.5 | 2.25 | 18 | 18 | 18 | 9 | 4.5 | | |
| 变幅 Trolleying | 7.5TVF | m/min | 0-65 | | | | | | | | | 7.5 | | |
| 回转 Slewing | 95VF | r/min | 0-0.8 | | | | | | | | | 9x3 | | |
| | 14.5VT | | | | | | | | | | | 14.5Nm x 3 | | |
| 行走 Travelling | 5.2TRVF | m/min | 0-15 | | | | | | | | | 5.2x4 | | |
| 电源 Power Supply | | 380V 50Hz / 440V 60Hz | | | | | | | | | | | | |
| KVA 供电容量 Necessary Electric Power | | 150KVA | | | | | | | | | | | | |

平衡臂配重
Counter-jib ballast

| | م | م (t) |
|-----|--------|-------|
| 75m | 21.24m | 24.1 |
| 70m | 21.24m | 22.5 |
| 65m | 21.24m | 21.7 |
| 60m | 21.24m | 20.1 |
| 55m | 21.24m | 17.8 |
| 50m | 17.24m | 24.9 |
| 45m | 17.24m | 20.9 |
| 40m | 17.24m | 20.7 |

可变换的其它安装方式
Mounting possibilities



F 反力 ■ 工作状态 In service ⊕ 自重 不带载荷及配重，最大臂长及标准高度时的自重。
Reactions ■ 非工作状态 Out of service Self-load Without load and counter-weight with longest jib and standard height