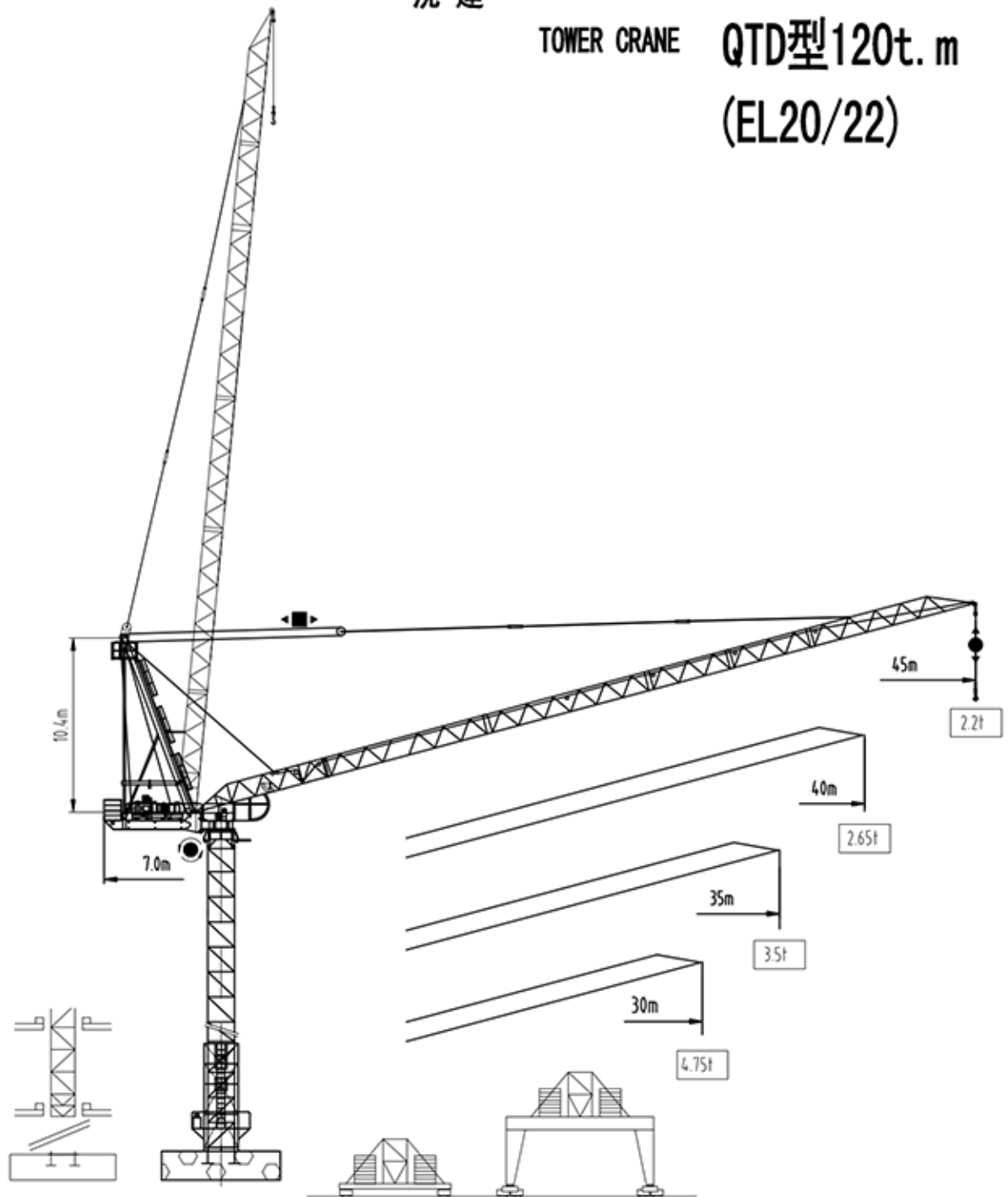




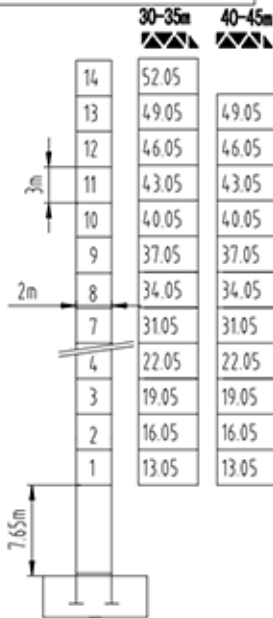
沈阳三洋建筑机械有限公司  
SHENYANG SANYO BUILDING MACHINERY CO., LTD

TOWER CRANE QTD型120t.m  
(EL20/22)



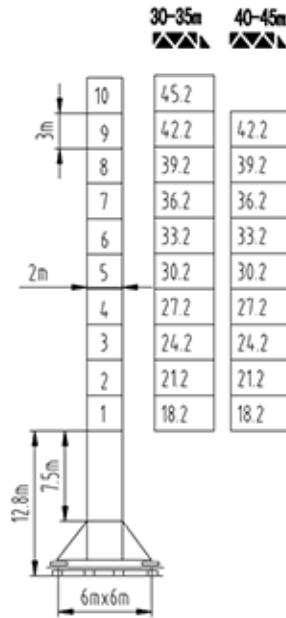


塔身截面 Mast 2mx2m 30-45m



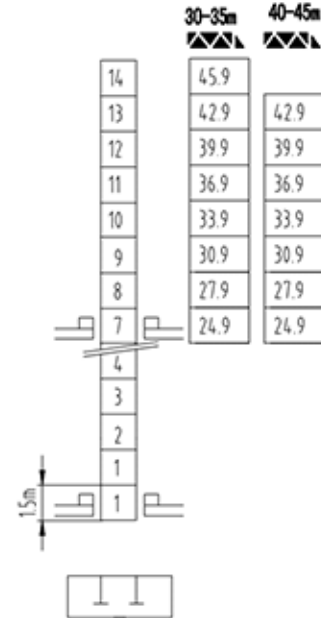
F2 ♂ F3

F2	• 115t	▪ 217t
F3	• 70t	▪ 180t
⊕	61t	

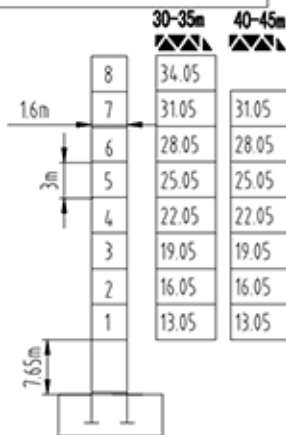


F1 ♂

F1	• 65t	▪ 89t
⊕	56t	

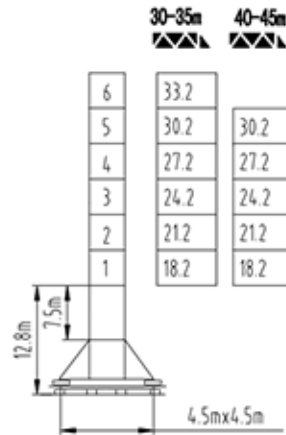


塔身截面 Mast 1.6mx1.6m 30-50m



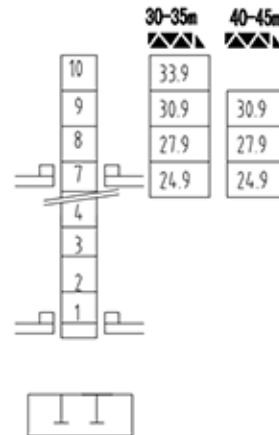
F2 ♂ F3

F2	• 110t	▪ 135t
F3	• 82t	▪ 105t
⊕	43t	



F1 ♂

F1	• 60t	▪ 68t
⊕	45t	



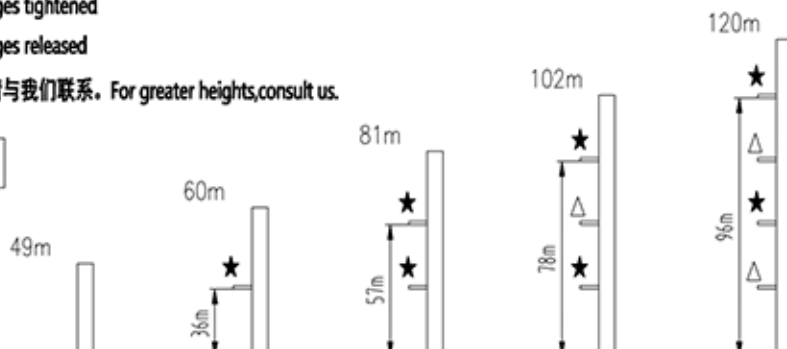
固定式附着高度 Anchoring height of stationary crane

★ 紧固附着框 Anchorages tightened

△ 放松附着框 Anchorages released

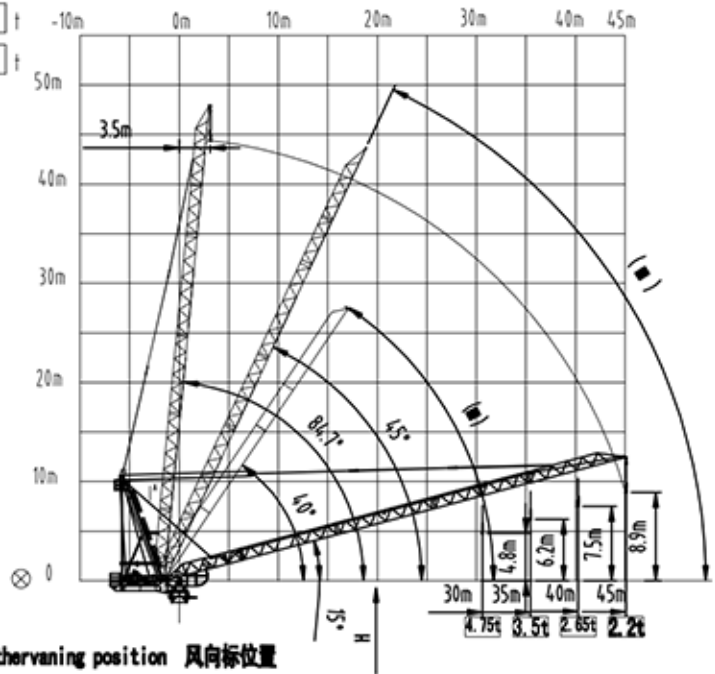
如需达到更高的高度, 请与我们联系。For greater heights, consult us.

塔身截面 Mast 2mx2m



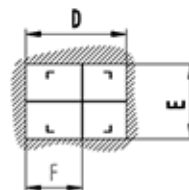
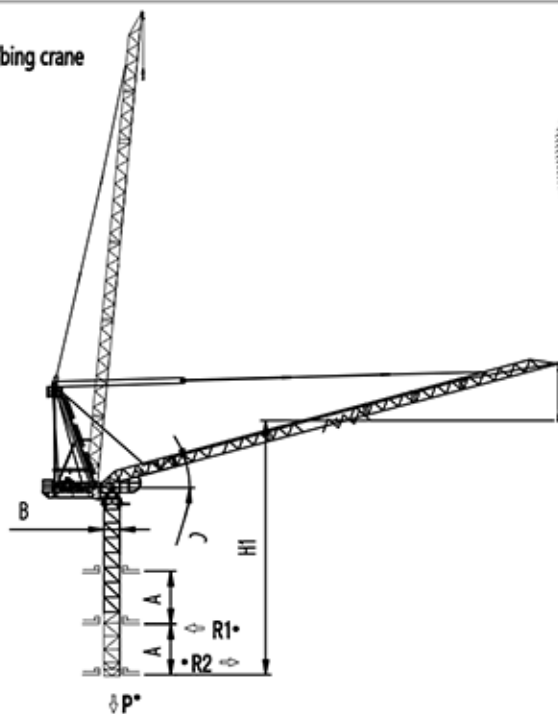
载荷特性 Load diagrams

45m	3.5	→	20.5	22.5	25	27.5	30	32.5	35	37.5	40	42.5	45	m
			8.0	7.15	6.2	5.35	4.6	3.95	3.4	2.95	2.6	2.35	2.2	t
			4.0 3.4 2.95 2.6 2.35 2.2 t											
40m	3.5	→	20.5	22.5	25	27.5	30	32.5	35	37.5	40	m		
			8.0	7.2	6.25	5.4	4.65	4.0	3.45	3.0	2.65	t		
			4.0 3.45 3.0 2.65 t											
35m	3.5	→	20.5	22.5	25	27.5	30	32.5	35	m				
			8.0	7.25	6.3	5.45	4.7	4.05	3.5	t				
			4.0 3.5 t											
30m	3.5	→	20.5	22.5	25	27.5	30	m						
			8.0	7.3	6.35	5.5	4.75	t						
			4.0 t											



Weathervaning position 风向标位置  
 Jib hinge shaft 臂根铰点

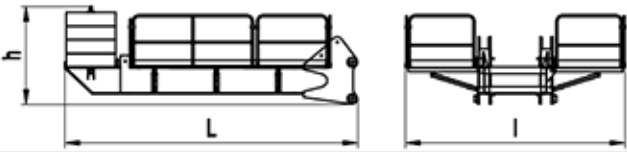
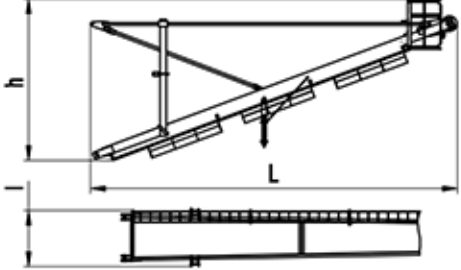
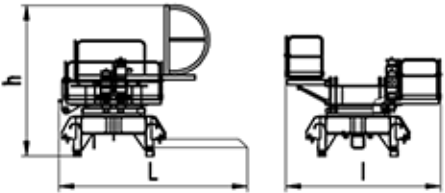
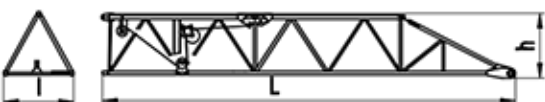
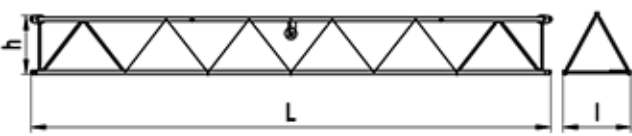
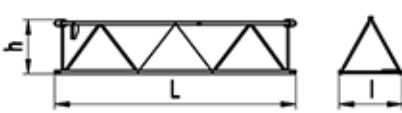
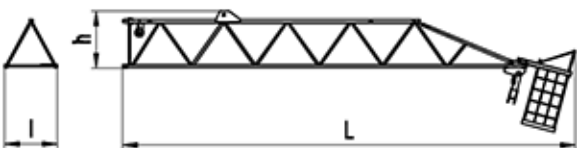
内爬塔机 Climbing crane

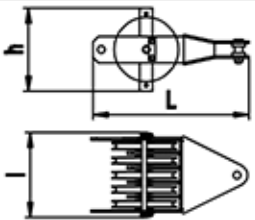
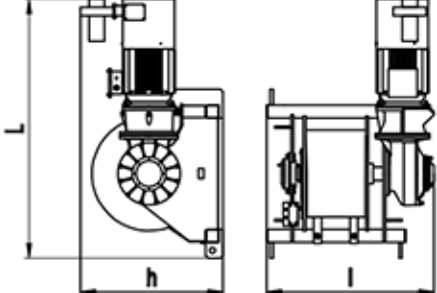
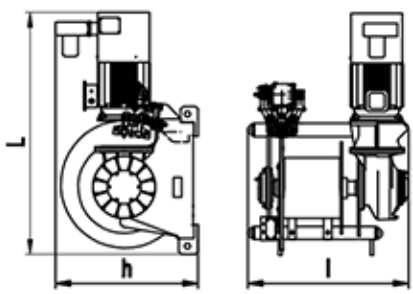
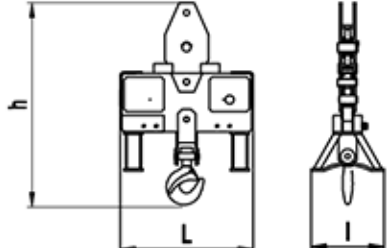
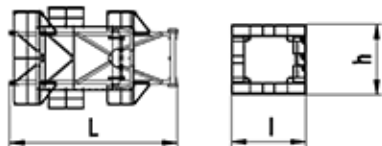


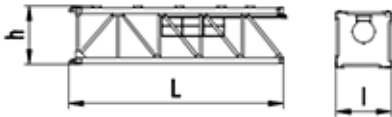
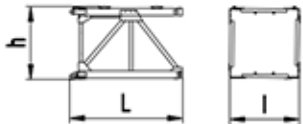
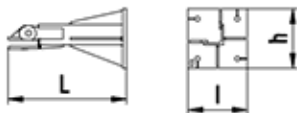
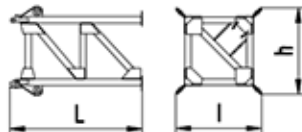
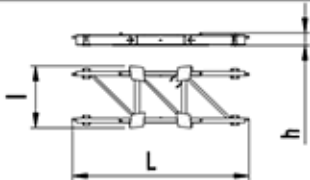

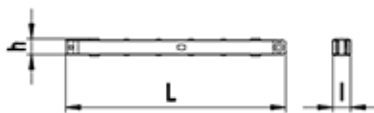
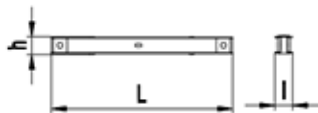
A	16m-19m
B	2m
C	15°-84.7°
D	2.58m
E	2.17m
F	1.495m
H1	42.9m
R1*	26t-30t
R2*	13.1t-17t
P*	82t

• 工作状态无系数  
 In service without coefficient

外形尺寸重量表 Dimensions weights

塔机回转部分 Slewing		L(m)	l(m)	h(m)	Kg	
平衡臂 Counter-jib		5.92	4.44	1.98	4155	
塔头 Cat-head		4.89	1.70	11.12	3724	
回转总成 Pivot		∅1.6m	4.56	3.96	3.64	5232
		∅2m	4.56	3.96	3.64	5232
起重臂节 Jib section		1	8.36	1.42	1.40	838
起重臂节 Jib section		2	10.12	1.33	1.25	685
起重臂节 Jib section		3	5.12	1.33	1.25	369
起重臂节 Jib section		4	11.45	1.33	2.88	1152

塔机回转部分 Slewing		L(m)	l(m)	h(m)	Kg
变幅滑轮组 Luffing pulley block		1.82	0.65	0.63	253
起升机构 Hoisting mechanism		1.97	1.27	1.09	1800
变幅机构 Luffing mechanism		1.84	1.27	1.09	2200
吊钩滑轮组 Hook assembly		1.08	0.59	1.64	481
顶升装置 Telescoping equipment		L(m)	l(m)	h(m)	Kg
顶升套架 Telescopic cage		▽1.6m	6.79	3.44	3495
		▽2m	7.26	4.3	4.05

塔身部分 Mast		L(m)	l(m)	h(m)	Kg	
基础节 Basic mast		∅1.6m	7.76	1.70	1.76	2625
		∅2m	7.76	2.0	2.1	3790
标准节 Standard mast		∅1.6m	3.28	1.70	1.76	1188
		∅2m	3.28	2.0	2.1	1577
底部 Base		L(m)	l(m)	h(m)	Kg	
固定支脚 Fixing angles		∅1.6m	1.195	0.49	0.49	181.5
		∅2m	1.2	0.6	0.6	295
底架塔节 Chassis mast		∅1.6m	3.69	2.00	2.00	2240
		∅2m	3.80	2.50	2.50	3780
底架纵梁 Side member		∅1.6m	6.32	2.08	0.54	1200
		∅2m	7.14	2.484	0.54	2140
底架横梁 Traverse		∅1.6m	4.88	0.467	0.705	1110
		∅2m	6.38	0.58	0.808	1500
底架撑杆 Brace rod		∅1.6m	3.86	0.27	0.28	350
		∅2m	4.45	0.34	0.37	620
底架水平杆 Horizontal member		∅1.6m	1.66	0.17	0.12	65
		∅2m	2.44	0.22	0.24	205

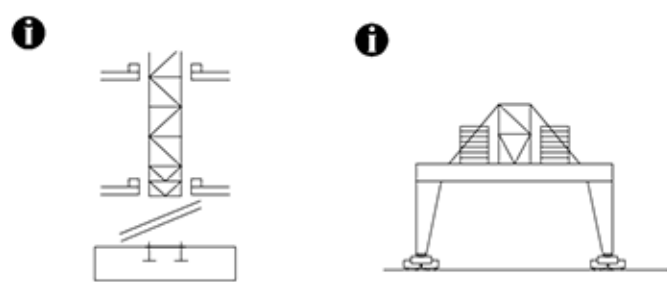
机构特性 Mechanisms specification														Kw	
起升 Hoisting		30LVF	m/min	0-5	0-21	0-42	0-63	0-84	0-2.5	0-10.5	0-21	0-31.5	0-42	517	30
			t	4.0	4.0	4.0	2.0	1.0	8.0	8.0	8.0	4.0	2.0		
变幅 Luffing		30DVF	min	0-3										30	
回转 Slewing		5.5SVF	r/min	0-0.8										5.5x2	
		9.5SVT												9.5Nm x2	
行走 Travelling		4TRVF	m/min	0-12										4x4	

电源	Power Supply	380V 50Hz / 440V 60Hz
KVA 供电容量	Necessary Electric Power	200KVA

平衡臂配置  
Counter-jib ballast

4.5m	7.0m	15
4.0m	7.0m	12
3.5m	7.0m	10
3.0m	7.0m	10

可变换的其它安装方式  
Mounting possibilities



**i** 同我们协商  
Consult us

F 反力	• 工作状态	In service	⊕ 自重	不带载荷及配重，最大臂长及标准高度时的自重.
Reactions	▪ 非工作状态	Out of service	Self-load	Without load and counter-weight with longest jib and standard height