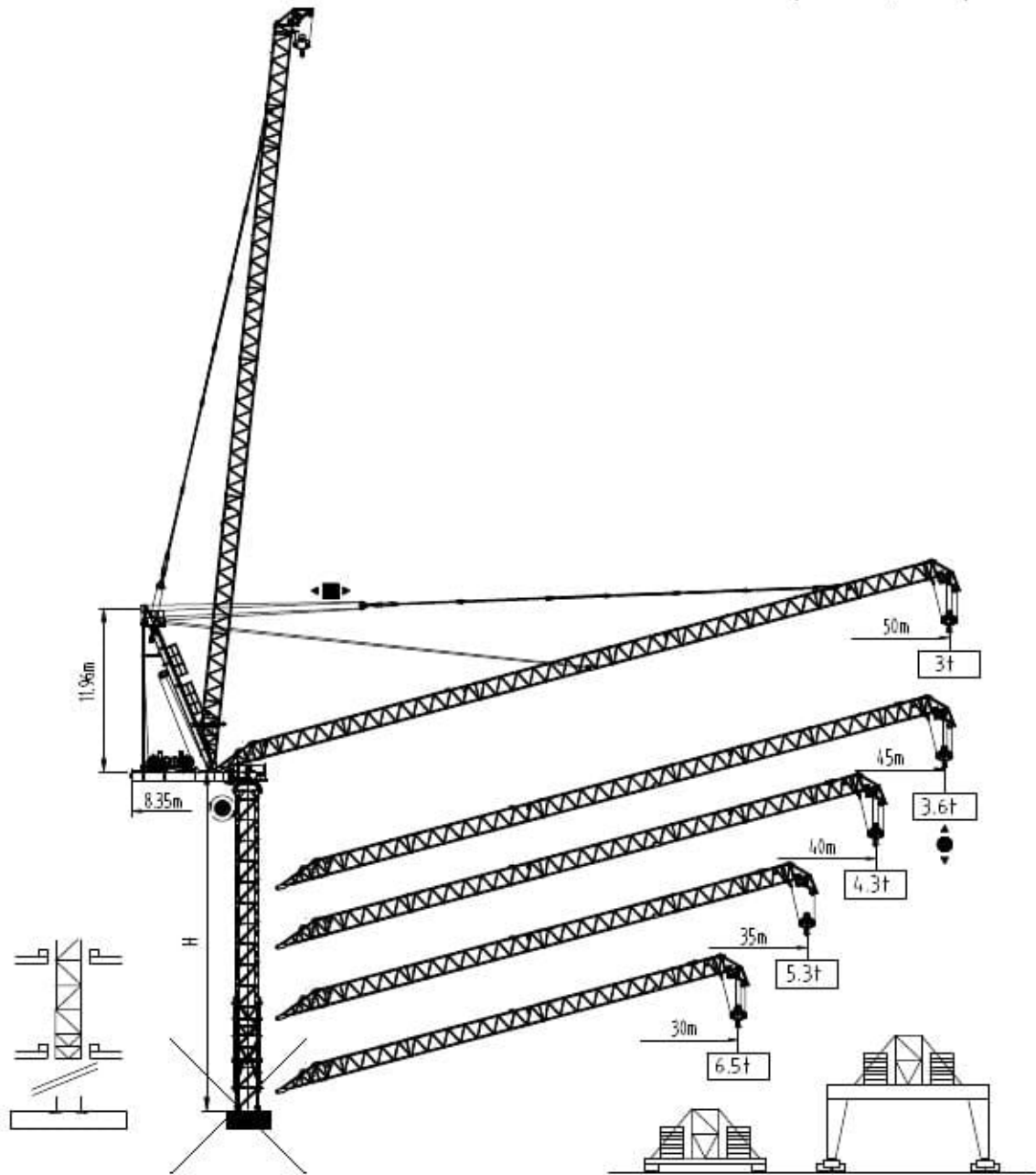




沈阳三洋建筑机械有限公司  
SHENYANG SANYO BUILDING MACHINERY CO., LTD

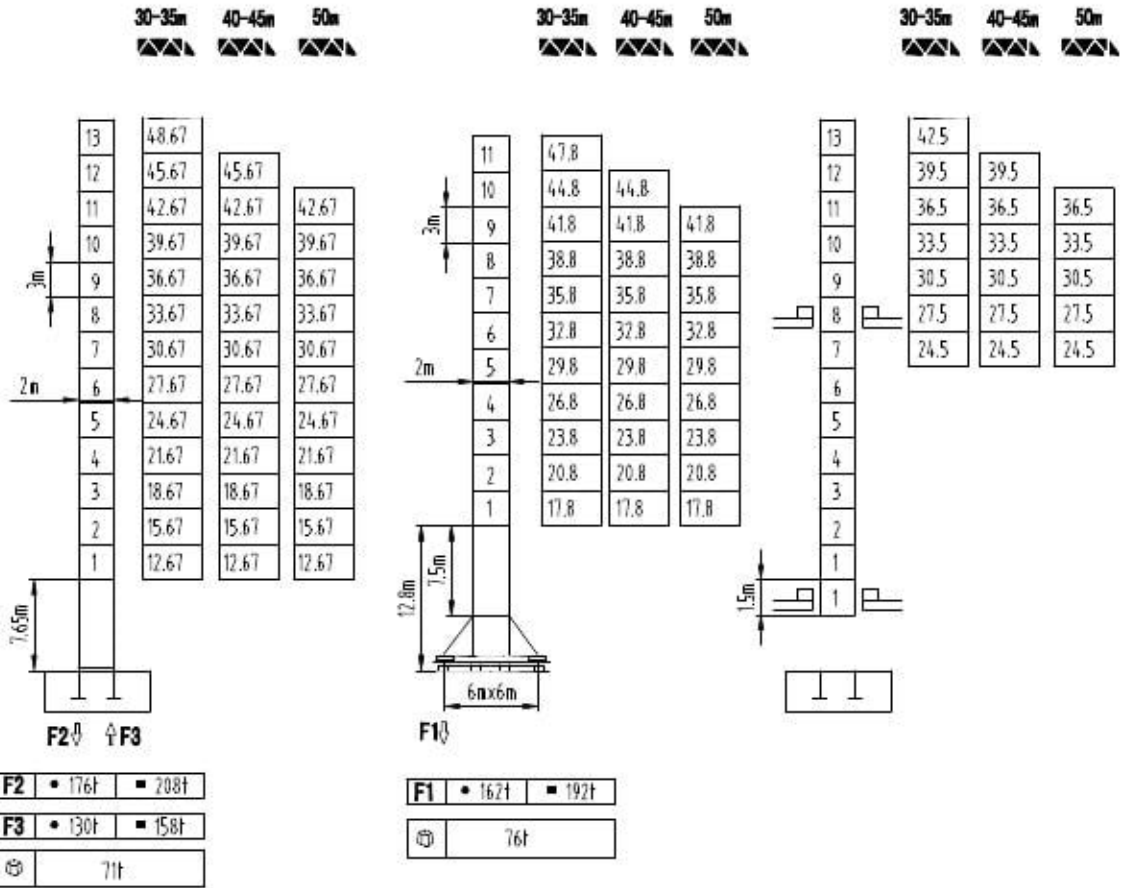
TOWER CRANE QTD型160t. m  
(FL25/30)





塔身截面 Mast □ 2m×2m

30-50m

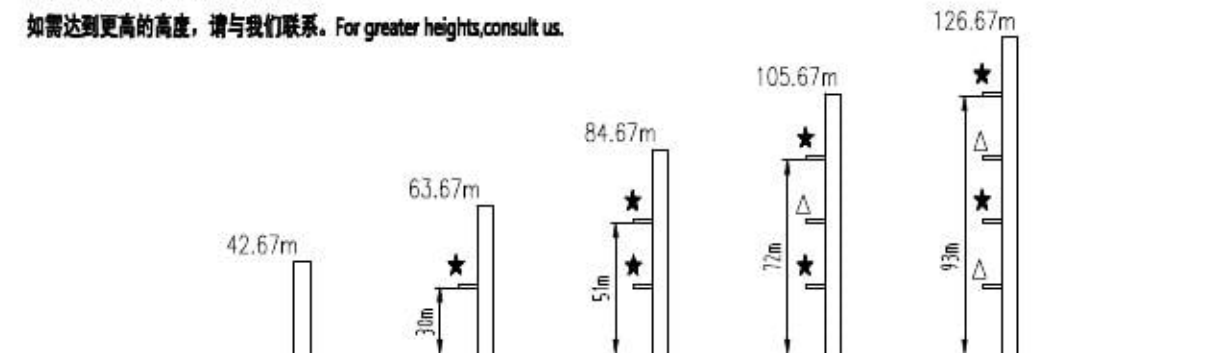


固定式附着高度 Anchoring height of stationary crane

★ 紧固附着框 Anchorages tightened

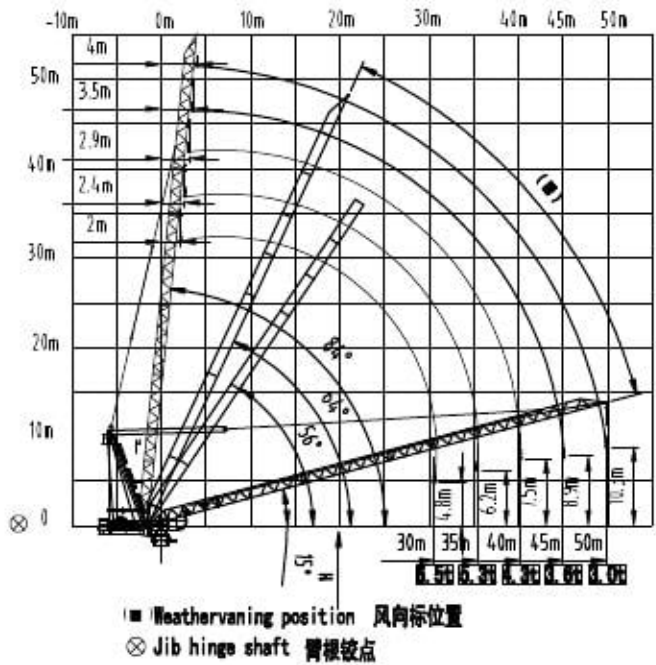
△ 放松附着框 Anchorages released

如需达到更高的高度, 请与我们联系。For greater heights, consult us.

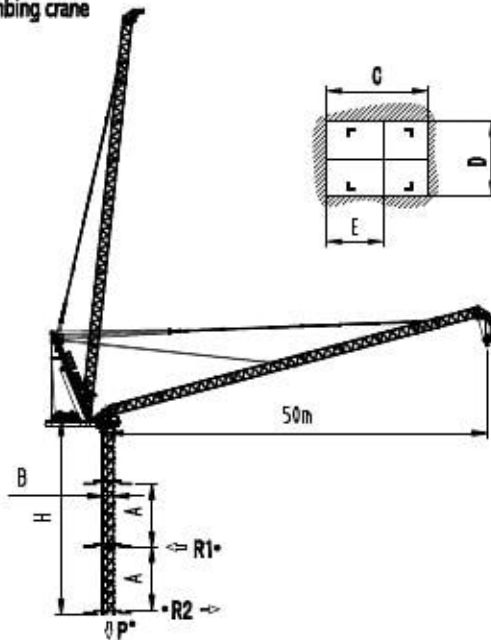


载荷特性 Load diagrams

50m	4	→	20	22	25	27	30	32	35	37	40	42	45	47	50	m
			10	8.7	7.5	6.8	6.0	5.5	4.9	4.5	4.1	3.8	3.5	3.2	3.0	t
			5.0													t
45m	3.5	→	20	22	25	27	30	32	35	37	40	42	45	m		
			10	9.0	7.7	7.0	6.2	5.7	5.1	4.7	4.2	4.0	3.6	t		
			5.0													t
40m	2.9	→	20	22	25	27	30	32	35	37	40	m				
			10	9.1	7.8	7.1	6.2	5.7	5.1	4.8	4.3	t				
			5.0													t
35m	2.4	→	20	22	25	27	30	32	35	m						
			10	9.2	8.0	7.2	6.4	5.9	5.3	t						
			5.0													t
30m	2	→	20	22	25	27	30	m								
			10	9.4	8.1	7.3	6.5	t								
			5.0													t



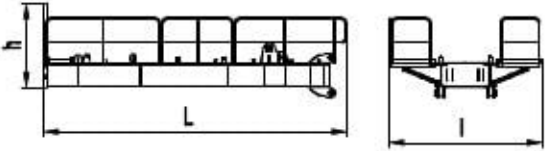
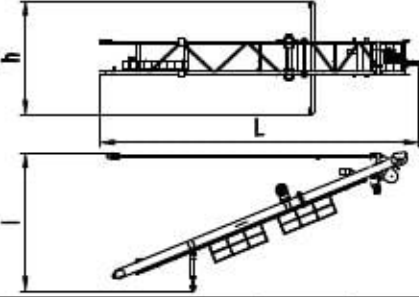
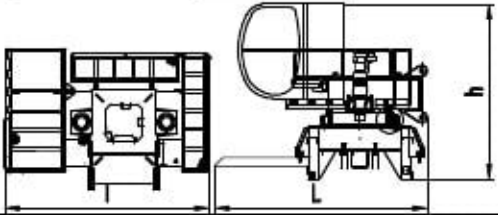
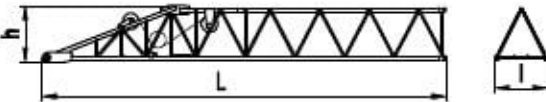

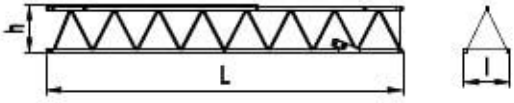
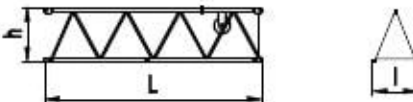
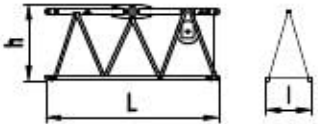
内爬塔机 Climbing crane

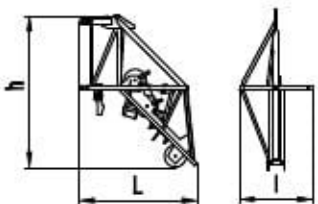
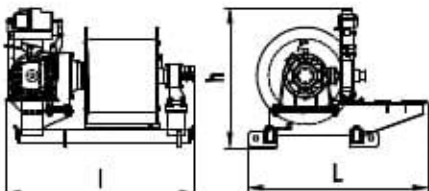
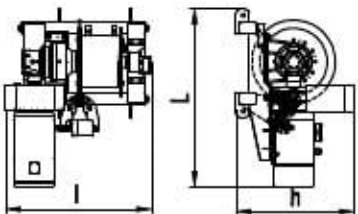
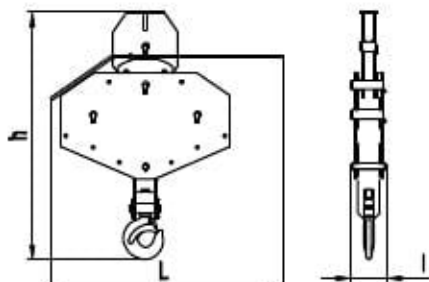
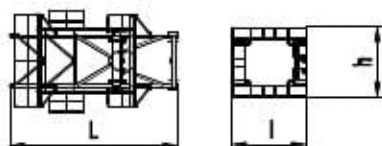



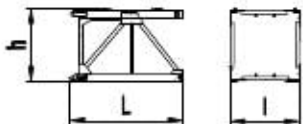
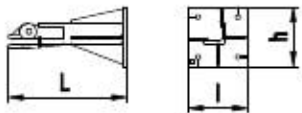
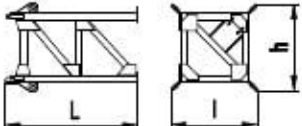
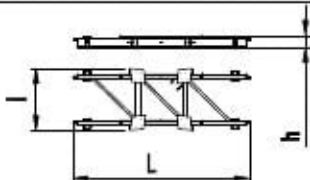
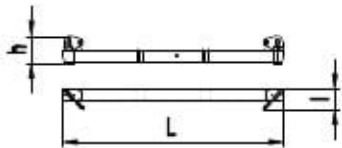
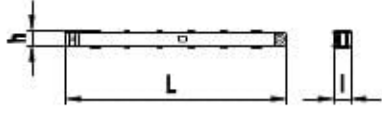
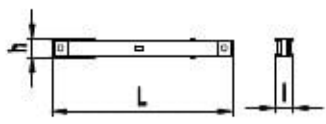
A	12m-21m
B	2m
C	2.58m
D	2.17m
E	1.495m
H1	36.5m
R1*	24.3t-33.4t
R2*	22.8t-31.6t
P*	69t

● 工作状态无系数  
In service without coefficient

外形尺寸重量表 Dimensions weights

塔机回转部分 Slewing		L(m)	l(m)	h(m)	Kg
平衡臂 Counter-jib		7.65	3.86	2.41	6610
塔头 Cat-head		12.89	6.01	4.62	6755
回转总成 Pivot		4.04	3.99	2.83	10331
起重臂节 Jib section		10.2	1.41	1.44	1567
起重臂节 Jib section		10.13	1.35	1.95	935
起重臂节 Jib section		10.11	1.39	1.34	888
起重臂节 Jib section		5.28	1.33	1.34	431
		5.28	1.33	1.34	405
		5.28	1.33	1.34	437
起重臂节 Jib section		3.14	1.33	1.36	357

塔机回转部分 Slewing		L(m)	l(m)	h(m)	Kg	
起重臂节 Jib section		8	2.12	1.33	2.93	506
起升机构 Hoisting mechanism		2.09	2.01	1.48	1780	
变幅机构 Luffing mechanism		2.15	1.77	1.44	2200	
吊钩滑轮组 Hook assembly		1.57	0.25	1.67	321	
顶升装置 Telescoping equipment		L(m)	l(m)	h(m)	Kg	
顶升套架 Telescopic cage		7.26	4.3	4.05	4863	

塔身部分 Mast		L(m)	l(m)	h(m)	Kg
基础节 Basic mast		7.76	2.0	2.1	4320
标准节 Standard mast		3.26	2.2	2.2	1820
底部 Base		L(m)	l(m)	h(m)	Kg
固定支脚 Fixing angles		1.2	0.6	0.6	295
底架塔节 Chassis mast		3.82	2.48	2.48	3260
底架纵梁 Side member		7.14	2.51	0.52	2009
底架横梁 Traverse		6.38	0.58	0.8	1410
底架撑杆 Brace rod		4.45	0.35	0.32	710
底架水平杆 Horizontal member		2.44	0.22	0.24	151



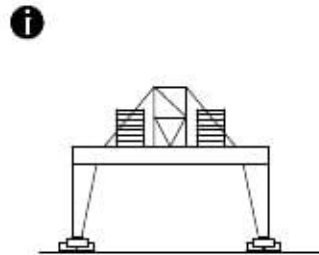
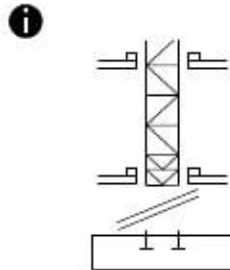
机构特性 Mechanisms specification													Kw	
起升 Hoisting	4SLVF	n/min	0-4.8	0-20	0-40	0-60	0-80	0-2.4	0-10	0-20	0-30	0-40	500	45
		t	5	5	5	2.5	1.25	10	10	10	5	2.5		
空幅 Luffing	37DVF		0-2.8										37	
回转 Slewing	9SVF	r/min	0-0.8										9x2	
	145SVT												145Nm x 2	
行走 Travelling	4TRVF		0-12										4x4	

电源	Power Supply	380V 50Hz / 440V 60Hz
KVA 供电容量	Necessary Electric Power	200KVA

平衡臂配置  
Counter-jib ballast

		吨 (t)
50m	8.35m	12
45m	8.35m	10.5
40m	8.35m	8.5
35m	8.35m	6
30m	8.35m	4.5

可变换的其它安装方式  
Mounting possibilities



同我们协商  
Consult us

F 反力 Reactions	<ul style="list-style-type: none"> <li>• 工作状态 In service</li> <li>▪ 非工作状态 Out of service</li> </ul>	⊙ 自重 Self-load	不带载荷及配重, 最大臂长及标准高度时的自重. Without load and counter-weight with longest jib and standard height
-------------------	---	-------------------	---

