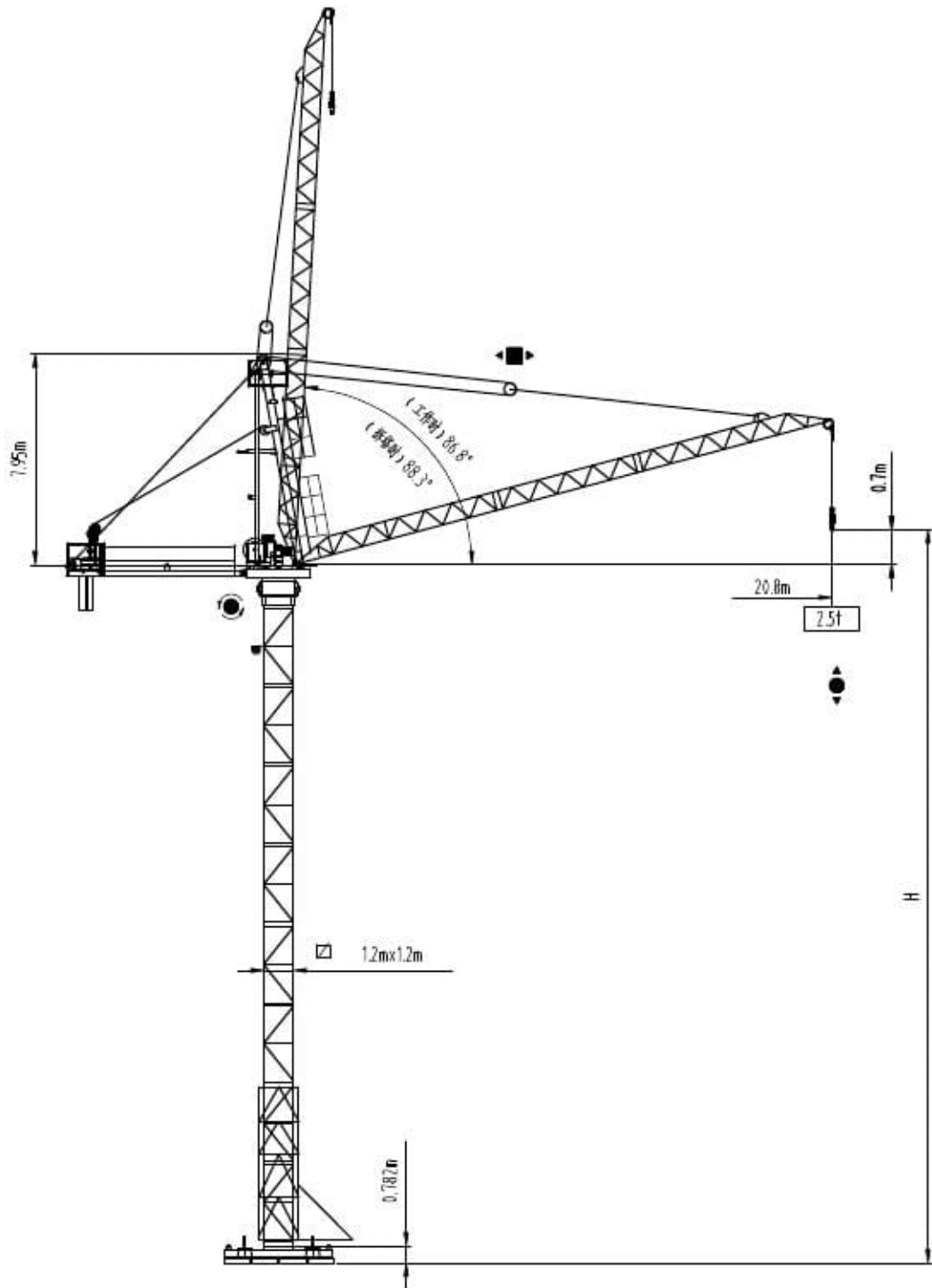




沈阳三洋建筑机械有限公司  
SHENYANG SANYO BUILDING MACHINERY CO., LTD

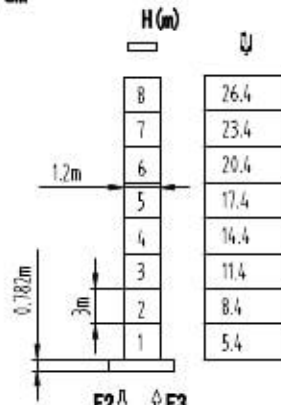
TOWER CRANE S50L4型50tm  
(S50L4)





塔身截面 Mast □ 1.2m×1.2m

20.8m



F2 ↓ ↑ F3

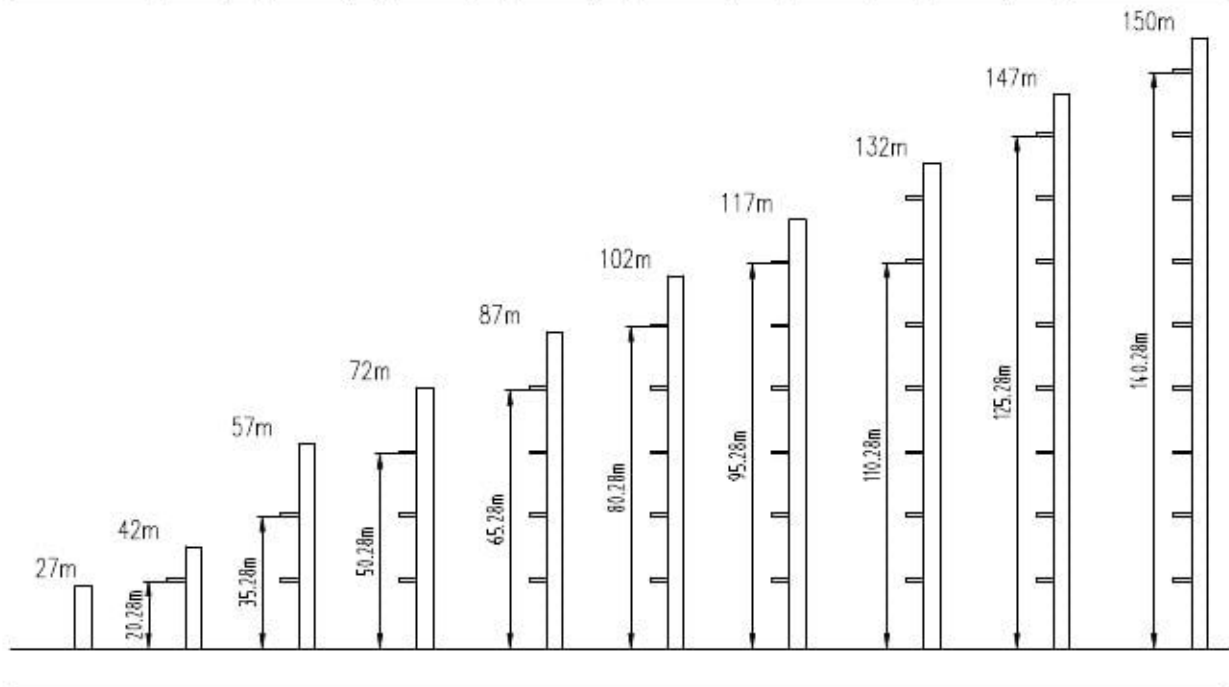
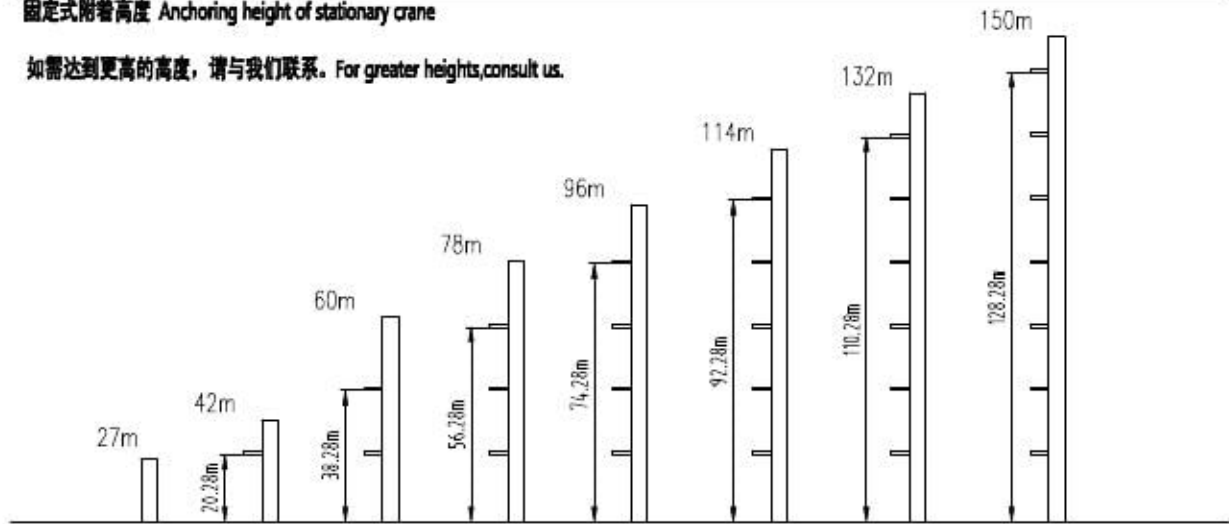
F2 □ 63t □ 93t

F3 □ 49t □ 81t

40.6t

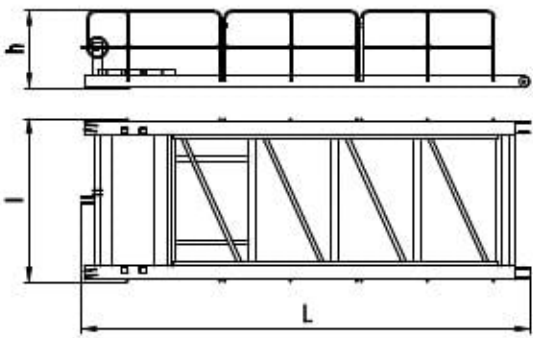
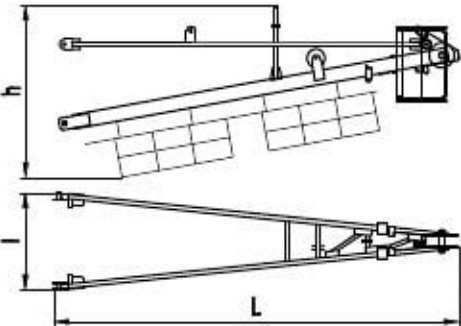
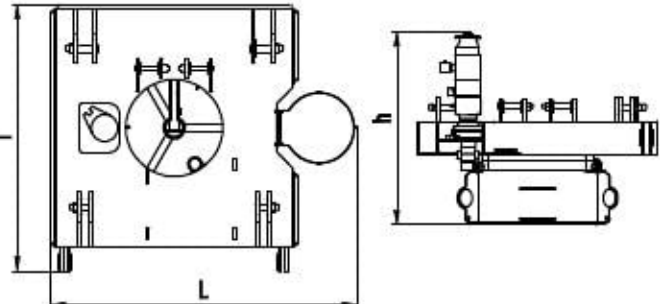

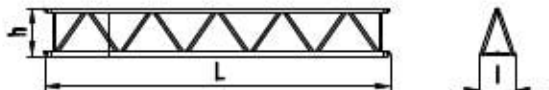
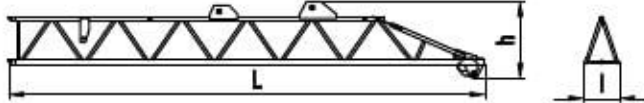
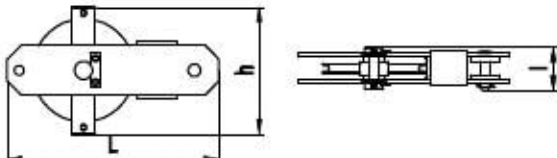
固定式附着高度 Anchoring height of stationary crane

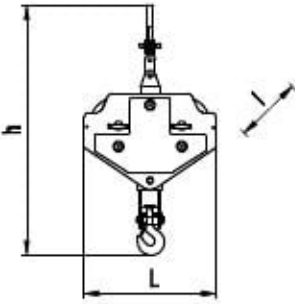
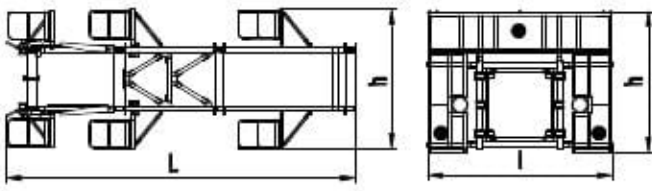
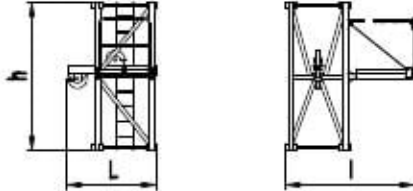
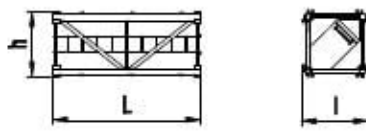
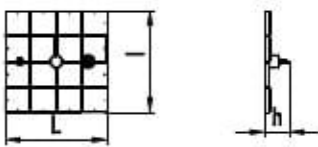
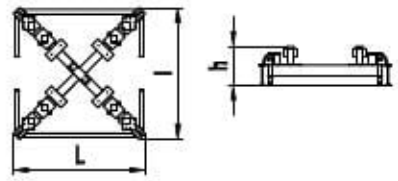
如需达到更高的高度, 请与我们联系. For greater heights, consult us.







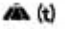
外形尺寸重量表 Dimensions weights

塔机回转部分 Slewing		L(m)	l(m)	h(m)	Kg
平衡臂 Counter-jib		6.792	2.5	1.178	1300
塔头 Cat-head		8.075	1.947	3.243	2635
回转机构 Slewing mechanism		8.062	2.7	2.31	4832
起重臂根节 Jib root section		8.158	0.576	1.058	537
短臂节 Short jib section		5.58	0.576	0.76	255
起重臂端节 Jib nose section		7.683	0.576	1.234	456
变幅滑轮组 Luffing pulley block		1.068	0.22	0.64	161

塔机回转部分 Slewing		L(m)	l(m)	h(m)	Kg
吊钩滑轮组 Hook assembly		0.834	0.457	1.592	491
顶升装置 Telescoping equipment		L(m)	l(m)	h(m)	Kg
顶升套架 Telescopic cage		11.77	3.072	3.518	6654
塔身部分 Mast		L(m)	l(m)	h(m)	Kg
起升专用节 Hoisting mast section		3.0	2.611	1.8255	1004
标准节 Standard mast		3.0	1.308	1.316	678
底部 Base		L(m)	l(m)	h(m)	Kg
固定支脚 Fixing angles		4.11	4.11	0.975	3976
底架基础 Chassis base		4.053	4.053	0.59	1537

机构特性 Mechanisms specification			吊钩 Hook					吊钩高度 m	kW	
起升 Hoisting	↑	15LVF	Hz	6	25	50	75	100	750	15
			m/min	0-4.8	0-20	0-40	0-60	0-80		
			t	4	4	4	2	1		
变幅 Luffing	←→	7.5DVF	min	0-2.5 ( 15° ~ 88.9° )					7.5	
回转 Slewing	⊙	4.4SVF	r/min	0-0.3					4.4	
电源 Power Supply		380V 50Hz / 440V 60Hz								
KVA 供电容量 Necessary Electric Power		30KVA								

平衡臂配置  
Counter-jib ballast

工作状态 In service	非工作状态 Out of service	自重 Self-load
		 (t)
20.8	8.035t	3.8

F 反力      • 工作状态    In service      ⊙ 自重    不带荷载及配重，最大臂长及标准高度时的自重。  
Reactions    ▪ 非工作状态    Out of service    Self-load    Without load and counter-weight with longest jib and standard height