

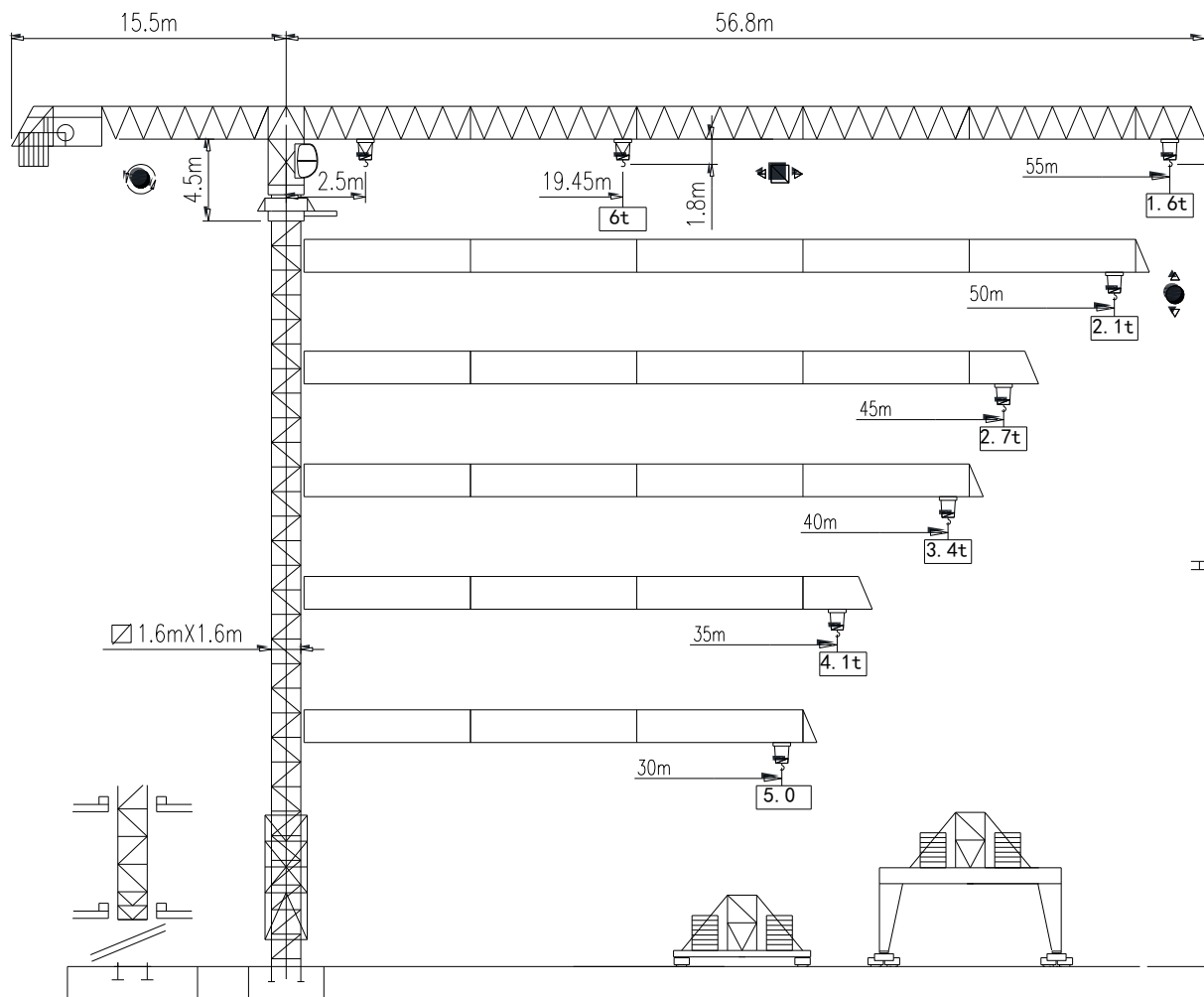


三洋重工

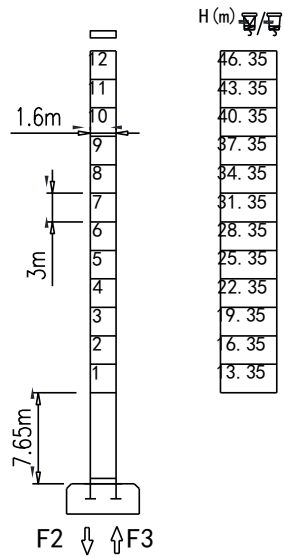
SANYO HEAVY INDUSTRY GROUP

TOWER CRANE

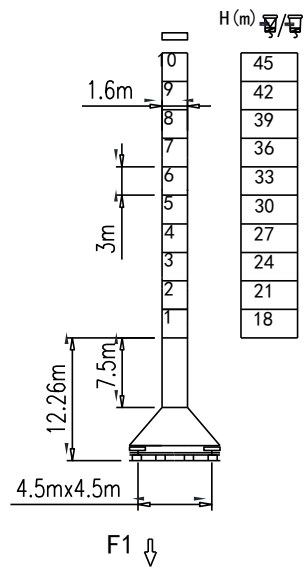
QTZ型110tm
(R55/16)



塔身截面 Mast 1.6mx1.6m 55m

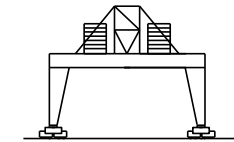
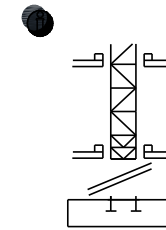


F2	● 64t	■ 78t
F3	● 95t	■ 104t
	📦 43t	



F1	● 72t	■ 91t
	📦 50t	

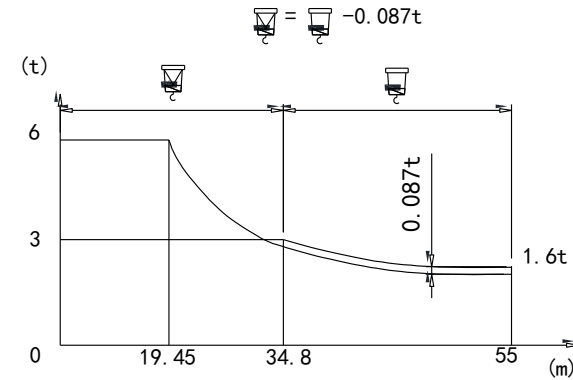
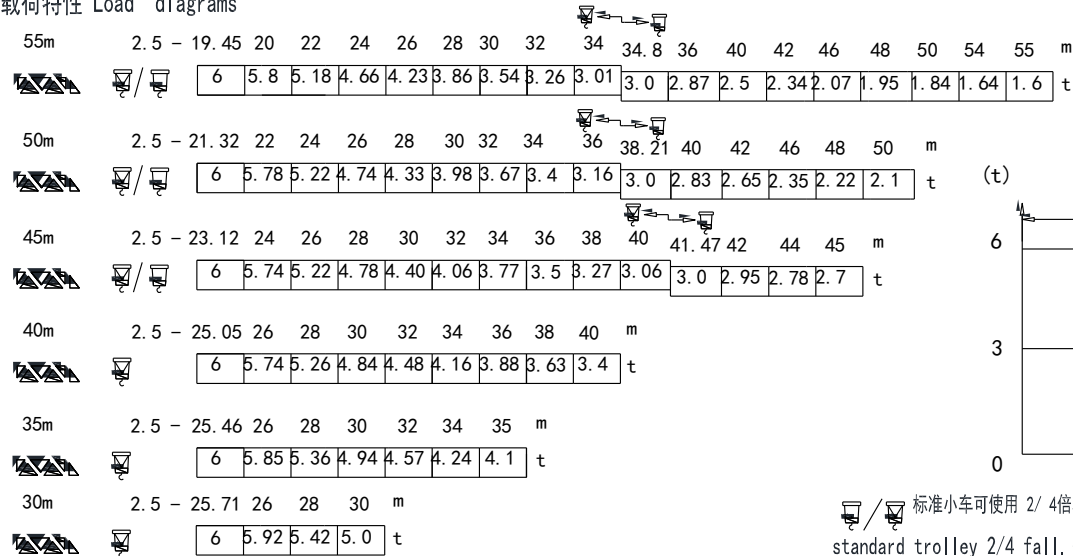
可变换的其它安装方式
Mounting possibilities



● 同我们协商
Consult us

F 反力 Reactions ● 工作状态 In service 📦 自重 不带载荷及配重, 最大臂长及标准高度时的自重 Without load and counter-weight with longest jib and standard height
 ● 非工作状态 Out of service Self-load

载荷特性 Load diagrams

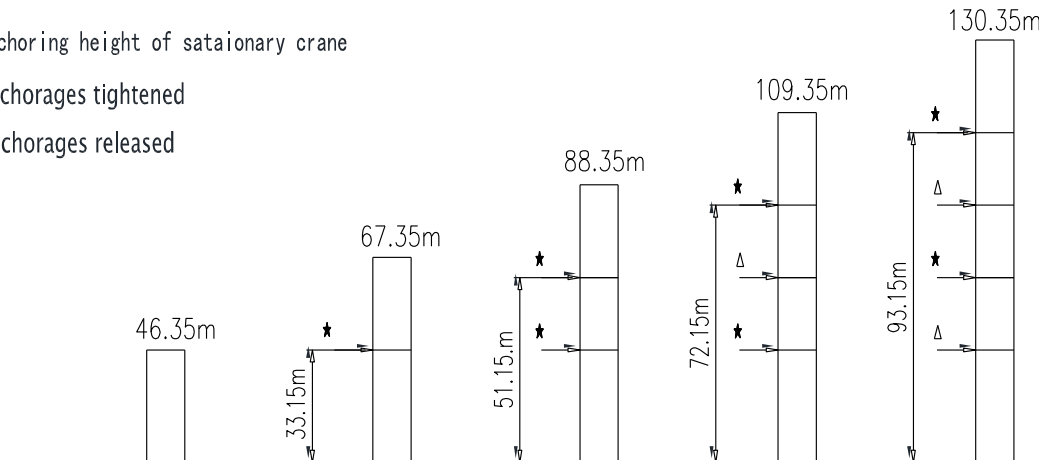


/ 标准小车可使用 2/4 倍率绳, (使用四倍率绳时, 应从二倍率的载荷中减去 0.087 吨)
standard trolley 2/4 fall. (When using subtract 0.087t from the loads).










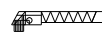

固定式附着高度 Anchoring height of stationary crane

★ 紧固附着框 Anchorages tightened

△ 放松附着框 Anchorages released



如需达到更高的高度, 请与我们联系。
For greater heights, consult us.

机构特性 Mechanisms specification												 m	kw		
起升 Hoisting		24PQC15F	m/min	0-6.5	0-40	0-38	0-77		0-3	0-20	0-19	0-38		400	24/24/4
			t	3	3	3	1.5		6	6	6	3			
变幅 Trolleying		4D3V3	m/min	0-58									75Nm		
回转 Slewing		5.5SVF	r/min	0-0.8									5.5x2		
		95SVT	r/min	0-0.8									95Nm x 2		
行走 Travelling		4TRVF	m/min	0-12									4x4		
 电源 Power Supply				380V 50Hz / 440V 60Hz											
KVA 供电容量 Necessary Electric Power				60KVA											
平衡臂配重 Counter-jib ballast															
						 (t)									
				55m	15.5m	11.0									
				50m	15.5m	11.0									
				45m	15.5m	8.6									
				40m	15.5m	7.6									
				35m	15.5m	6.2									
				30m	15.5m	5.2									