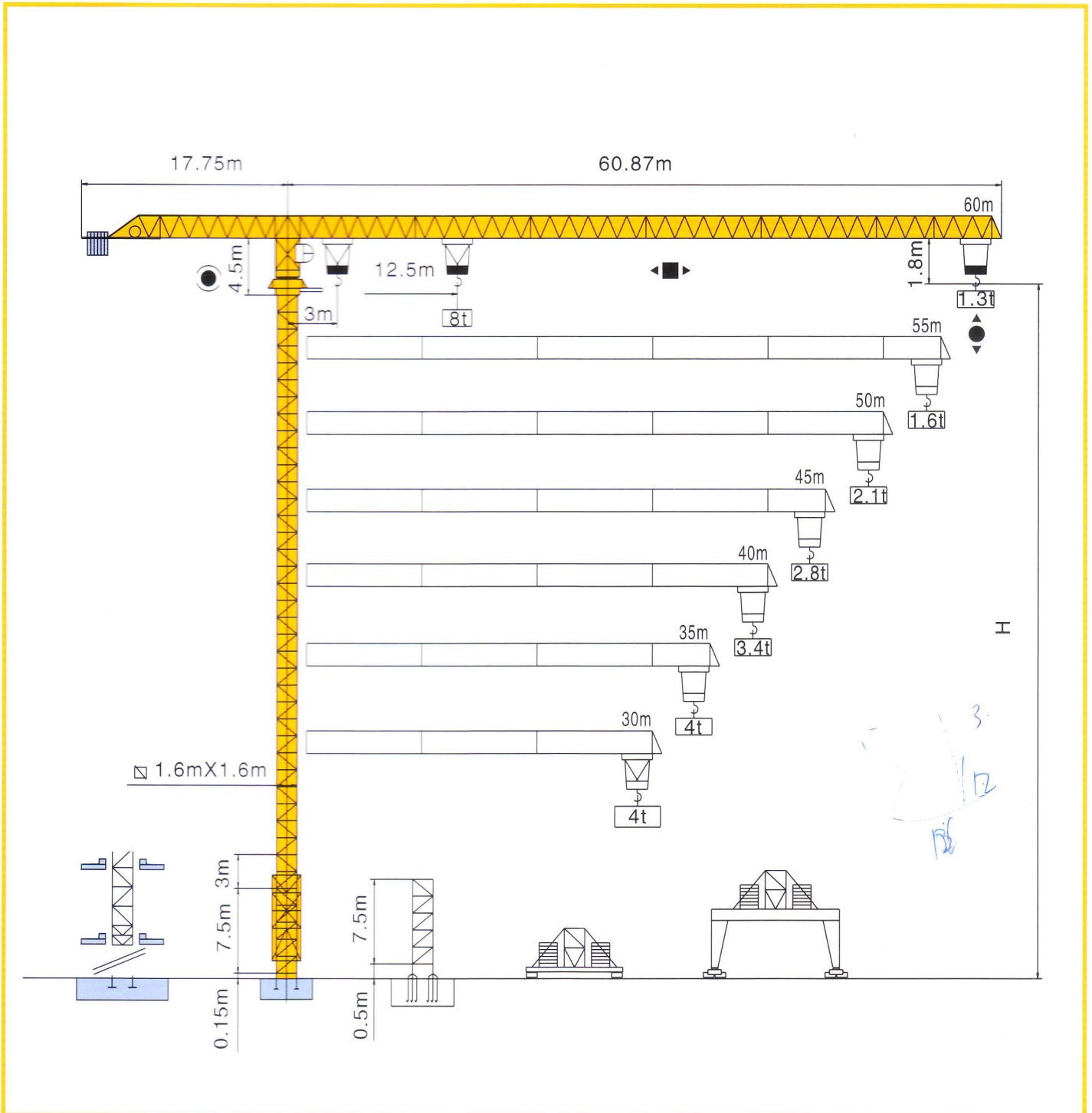




SP6013-8

TOWER CRANE (QTP型140tm)



沈阳三洋建筑机械有限公司
 SHENYANG SANYO BUILDING MACHINERY CO.,LTD.

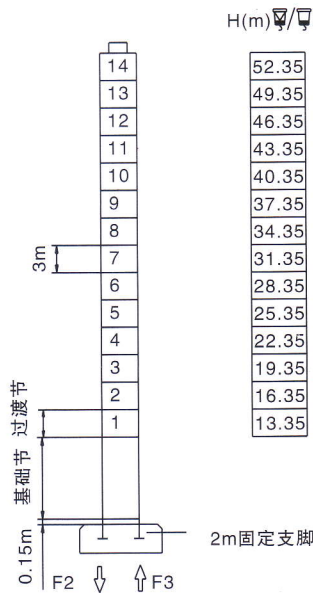


沈阳三洋建筑机械有限公司

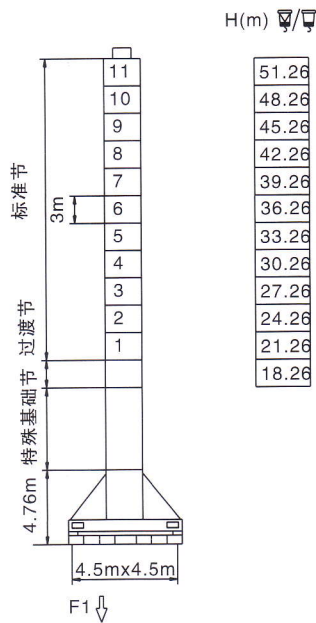
SHENYANG SANYO BUILDING MACHINERY CO.,LTD.

塔身截面 Mast $\square 1.6m \times 1.6m$

60m

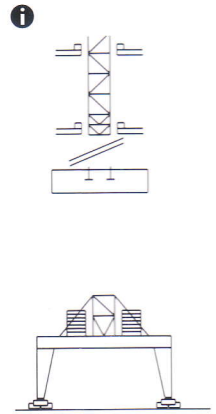


F2	$\varnothing 119t$	$\blacksquare 197t$
F3	$\varnothing 30t$	$\blacksquare 111t$
	\square	50t



F1	$\varnothing 73t$	$\blacksquare 99t$
	\square	57t

可变换的其它安装方式
Mounting possibilities



同我们协商
Consult us

F 反力 Reactions

- 工作状态 In service
- 非工作状态 Out of service

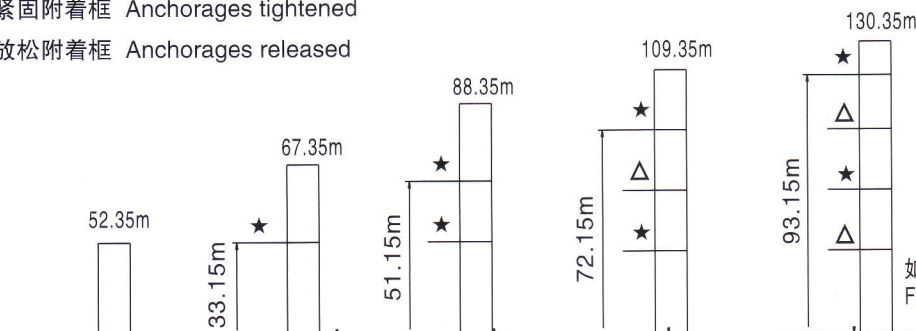
自重 Self-load

不带载荷及配重, 最大臂长及标准高度时的自重

Without load and counter-weight with longest jib and standard height.

固定式附着高度 Anchoring height of stationary crane

- ★ 紧固附着框 Anchorages tightened
- △ 放松附着框 Anchorages released

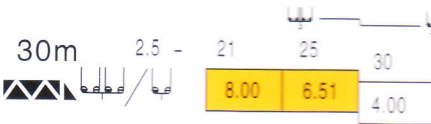
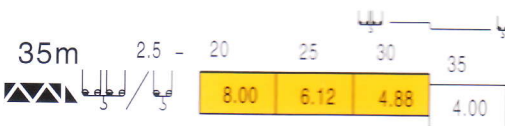
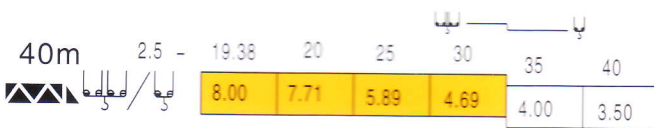
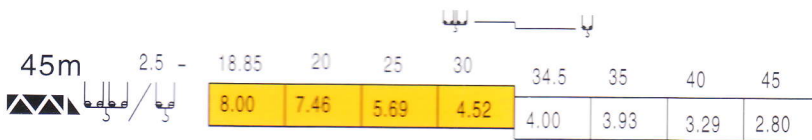
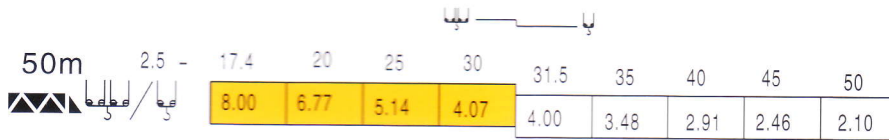
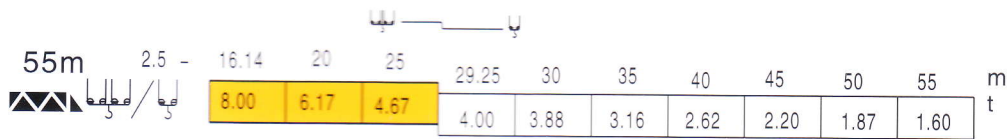
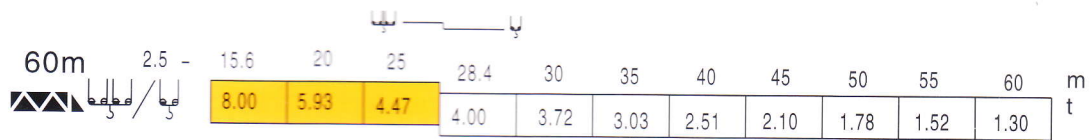


如需达到更高的高度, 请与我们联系。
For greater heights, consult us.

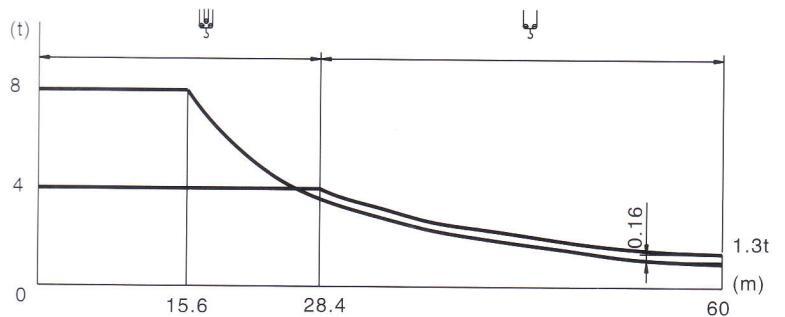
SP6013-8

TOWER CRANE (QTP型140tm)

载荷特性 Load diagrams



$$\text{C} = \text{C} - 0.16t$$



标准小车可使用2/4倍率绳, (使用四倍率绳时, 应从二倍率的载荷中减去0.16吨)
standard trolley 2/4 fall. (When using 4x fall, subtract 0.16t from the loads).



SP6013-8

TOWER CRANE (QTP型140tm)

机构特性 Mechanisms specification											kw
起升 Hoisting		37LVF	m/min	0-40	0-61	0-82	0-20	0-30.5	0-41	400	37
			t	4	2	1	8	4	2		
变幅 Trolleying		4TVF	m/min	0-55						4	
回转 Slewing		5.5SVF	r/min	0-0.8						5.5x2	
		95SVT		95Nm x 2							
行走 Travelling		4TRVF	m/min	0-12						4x4	
电源 Power Supply				380V 50Hz / 440V 60Hz							
KVA 供电容量 Necessary Electric Power				60KVA							

*在这种情况下要同制造商联系

平衡臂配重 Counter-jib ballast

			(t)
60m		16.675m	14.3
55m		16.675m	13.1
50m		16.675m	12.3
45m		16.675m	10.7
40m		16.675m	9.7
35m		16.675m	7.9
30m		16.675m	7.7

各种数据以修改为准subject to modification

执行标准 Voluntary Standards: GB/T 13752



中国 沈阳三洋建筑机械有限公司
SHENYANG SANYO BUILDING MACHINERY CO., LTD. CHINA



三洋重工

厂址: 中国 沈阳市大东区沈北路142号 邮政编码: 110122
 电话: 024-88093933 88091979 (销售管理部) 024-28909993 (国内销售部)
 024-28909993 (海外销售部) 024-28909649 (售后服务部)
 传真: 024-88093057
 网址: <http://jianji.sanyogroup.com>

ADD: NO.142 Shenbei Road, Dadong District, Shenyang, China Postcode: 110122
 TEL: 86-24-88093933 88091979 (Sales Managing Dept) 86-24-28909993 (Domestic Sales Dept)
 86-24-28909993 (Overseas Sales Dept)
 86-24-28909649 (After-Sale Service Dept)
 Fax: 86-24-88093057
 Web: <http://jianji.sanyogroup.com>